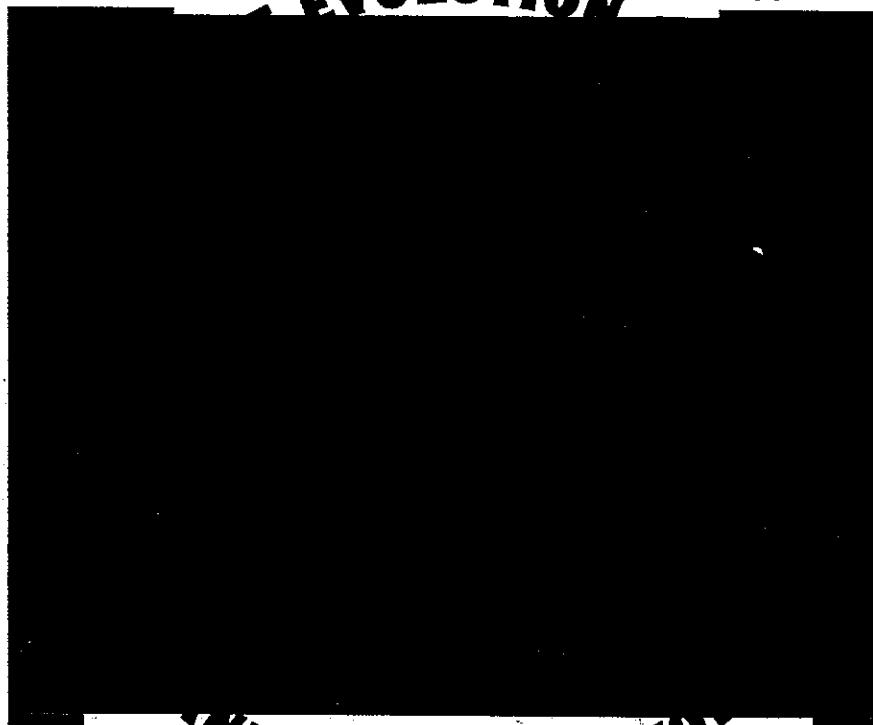


The FOLLOW UP

with Howard G. Sartin, Ph.D.

EVOLUTION

ISSUE # 78



INDICAPPING REVOL

1999 Holiday Issue

with Instructions for the New Millennium

Publisher's Desk	1
The Gift by The 'Capper	6
Grinding It Out for Value	8
The Fillies and Us Old Gray Mares by Aline Best	9
Vox Populi	10
Total Energy	12
Cracking the VALIDATOR Code w/full instructions	18
Going to the Races with the Validator	29
Psychology of Winning	54
Installation and Downloading	64
From the Staff...	72

The FOLLOW UP is published six (6) times a year by O. Henry House, Inc. in conjunction with the Inland Empire Institute. Subscription price is \$75 per year third class mail and \$90 per year first class & Canadian mail, other foreign subscribers: \$100/year. Back issues are available for \$12.50 each. California residents add 7.75% sales tax. If you have any problem with your subscription or have a change of address, please contact O. Henry House at the address below. All information in this publication is for informational purposes only.

The FOLLOW UP

O. HENRY HOUSE, INC.

1390 E. 6TH STREET, STE 5

BEAUMONT, CA 92223

909-845-5907

between 1 and 3 PM Pacific time

Sartin Tech Support

909-845-1728

between 11:30 AM and 3 PM Pacific time

Please send all correspondence to this address. This includes submission of material for publication consideration; letters, opinions, comments - whatever.

Thank you,

O. HENRY HOUSE, INC.

O. HENRY HOUSE, INC.

PIRGO

THE SARTIN

METHODOLOGY

1390 E. 6TH STREET #5

BEAUMONT, CA 92223

STATEMENT OF POLICY

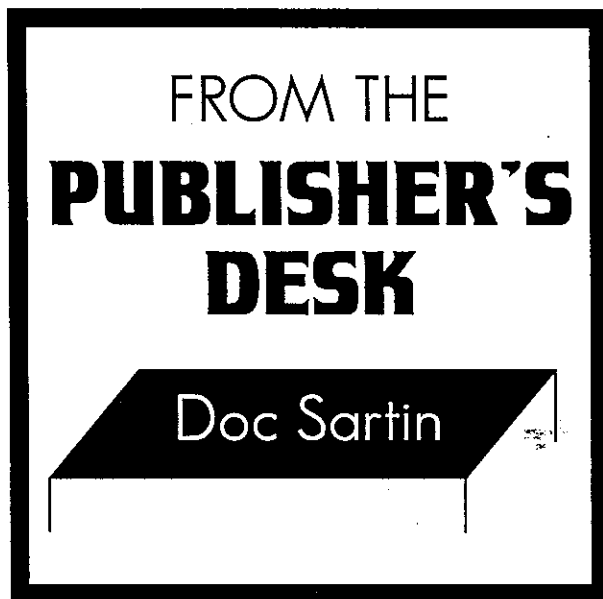
The Sartin Methodology is based in Psychotherapy and its goals are NOT directed toward fostering the illusions or delusions of gamblers seeking magic solutions for picking winners. We are primarily a healing arts organization dedicated to providing an alternative solution to mainstream psychiatry's prescription of total abstinence for non-winning handicappers. Our slogan is - and always has been -

"THE CURE FOR LOSING IS WINNING"



© 1999, 2000 O. HENRY HOUSE, INC.

All right reserved. No part of this work may be reproduced or transmitted in any form or by any means, electronic or mechanical, including photocopying and recording, or by any information storage or retrieval system, except as may be expressly permitted by the 1976 Copyright Act or in writing from the publisher. Past Performance and Results charts copyrighted by Daily Racing Form, Inc.



Some clients asked me why, in my Follow Up 77 "White Paper," I spelled out so many factors that were old hat to most clients. The reason stems from the fact that we have new members who are taking spots left by the fact that, tragically, many long time clients have died or become incapacitated by superannuation. Not all new clients have purchased back issues of the Follow Up (\$12.50 each) so they are not as familiar with our concepts and language as most of you. By the same token we have a few clients who still need this kind of review, since they apparently just skim through the Follow Up instead of

reading each issue several times. I've noticed that those who read and re-read are the big winners.

The most heartening and satisfying news of the past two months came from the Beta Testers of the VALIDATOR. Most expressed their result to me verbally, but this e-mail from Dick Fritts, summed it up most succinctly:

Doc,

This is the second week of use – it continues to get more winners!! Looks like I get 2 to 3 more winners in a 20 race cycle than I have been with SYNT.

Great improvement!!

D.F., Washington (beta tester The Validator)

Dick has been a consistent winner with various Methodology programs for a number of years. His key phrase when addressing seminars has always been, "I just do what the Doc says and I win."

For such a person to declare THREE more winners in 20 races resulting from his use of the VALIDATOR, has a lot to do with our pricing of the program and my feelings about many clients not needing it if they're getting optimal results from whatever other program they are using.

Based on tester results and my own improved profits, by all rights the VALIDATOR should be the most expensive program we've ever produced. For those who purchased SYNTHESIS after August 1, 1999, we sold it for just \$250. For CLIENTS ONLY, who didn't qualify for the "giveaway" lower price, we made a special offer that expires January 24, 2000 (we extended the deadline a month), making the VALIDATOR available for only \$450.

Since I have nothing to do with the monetary aspects of O. Henry House, these prices manifested my daughter Mary's Holiday Spirit, whether you celebrate Christmas, Chanukah, Ramadan, Kwanzaa, or something else.

My initial wish was that those who lacked the ambition or skill to properly interpret corollary readouts, would get this program, focus primarily on the V/DC boxes and the Incremental Pace

If you're in any way confused by the readouts, just use this one, as designated by the big black arrow over the V/DC box:

INCREMENTAL MATCH-UP GRAPH

11-CALL NINE ONE ONE
7-BZE
2-RUTULAN

✓ 29.00	10.20	5.30
	3.50	2.70
		3.00

Exacta
Trifecta

11-7
11-7-2

✓ 92.50
✓ 324.00

Along with the VALIDATOR's V/DC and the Incremental Pace Graph, the program also contains the Engen along with Superscreen and BL/BL from Synthesis as well as the Early-Late graph. **Nothing** is left out that is truly needed to win with optimal profit!

We still have clients who love to analyze. They prefer analysis to profit and I admire their intellectual tenacity: eternally searching for truths derived from their own minds rather than ours. Bless them. Even if they are non-winners, they are so because they are archetypes of man's eternal desire to rediscover fire on his own. One cannot criticize this ancient quest. I only hope they're rich enough to afford it. Don Quixote was, and there are lots of windmills in Europe dismembered by literature to prove it.

You've read letters to Vox Populi from people like Eddie in Nevada and Tommy in Louisiana, saying that Synthesis is the ultimate. That there is no possible way to improve upon it. Great guys, both of them. They made a challenge I could not resist. Hence, The VALIDATOR. My favorite psychiatrist, Dr. Alex Milstein, says it is a giant step forward, especially for those to whom other programs have been a challenge.

The object was to create a program with a pair of readouts so easy to comprehend that nobody (following directions) could ever lose. A very simple program on the outside, but highly complex internally. There will be those who feel it's too simple. It deprives them of their presumed powers of interpreting complex, multiphasic coronaries.

Anyone wanting help, I'll give it. Those who really don't need it, I bless and admire without reservation.

As for myself, I'll use the VALIDATOR over any handi/wagercapping computer program ever devised. I spent 25 years analyzing "How to WIN races. I discovered, as did Tom, Ainslie, that what now passes for mainstream "Handicapping," has little to do with WINNING.



December, 1999

Dr. Howard Sartin, one of the most brilliant racing analysts in the country will answer the questions and prayers of Pace Calculator users. We've sold many thousands of them and have hundreds of inquiries on how to best take advantage of this most valuable handicapping aid. The good doctor has the answers.

I was never by wildest stretch of the imagination, a "Brilliant" Racing Analyst. On the subject of racing, per se, I can't hold a candle to people like Tom Ainslie, Tom Brohamer or Mark Cramer. By the same token, with the possible exception of these three and perhaps a few others, I learned long ago that people with a surfeit of racing knowledge do not know how to win consistently. They simply cannot subordinate their racing knowledge egos to the realities of what WINS. Handicapping and WINNING are often mutually exclusive.

I wrote the articles on the Taulbot Pace Calculator, free of charge, to help those disdaining a computer, to WIN with what they have.

As for myself, I only want those profitable winners I got with SYNTHESIS and the additional ones I'm getting with the VALIDATOR.

I haven't taken any salary from this "business" since 1996, I *need* the extra money the VALIDATOR provides.



Another state joins California and the list of states that, for now, won't allow interstate phone wagering. This came from Captain Jim Leftwich in Texas:

IMPORTANT NOTICE

The Texas Racing Commission and Texas Attorney General have expressed serious reservations pertaining to the legality of Texas residents placing pari-mutuel wagers through account wagering services located in Pennsylvania, New York and other jurisdictions.

Phonebet is one such service and anticipates being formally requested to cease activity with respect to acceptance of wagers from Texas account holders. It is our intention to honor this request if made. We will notice you further at such time as we receive notice from the Texas authorities.

Phonebet will continue to conduct interstate account wagering to the extent permitted by state and federal law and hopes in the future to be able to provide wagering services once again within the State of Texas.

All of us at Phonebet thank you for your patronage and past support.

Sincerely,

Kimberly L. Smith
Director of Phonebet



P.O. Box 1000
Bensalem, PA 19020..

As of this writing, Arizona has been added to the states from which no Interstate wagers will be taken by any U.S. based telephone betting service. Philadelphia Park says they'll take interstate bets on certain tracks *providing* no state Attorney General has issued orders prohibiting it.

This will happen in more and more states pending clarification of the Federal Statute on Interstate gambling. You can bet there are certain powerful interests behind this storm just as they were in financing failed legislation against Indian Gaming in California.

The legal consensus is that all this prohibition will go away soon. Otherwise illegal bookies will flourish and the tax revenues of states involved will shrink. As for now, welcome back Al Capone.

CAUGHT IN THE ACT

Aline Best, manning (or is that womaning) our Tech Support Hot Line, received a call from a client who did not recognize her name even though it has been published so many times in the Follow Up. Another case of someone subscribing but not reading the Follow Up. The questions asked had all been answered in the Follow Up. Aline did not hesitate to tell him that. But she also gave him verbal courteous and satisfactory answers to his questions.

Oh my, Oh Y2K. I cannot tell you if the earth will be destroyed with the advent of Y2K. I CAN assure you that our programs will work REGARDLESS of date. Next time you do a race enter a date in 2000 or 2001. Any of OUR advanced programs will work as before. In addition we're now working to make programs WINDOWS compatible.

Please don't get Windows 2000, however! It's rumored that Bill Gates wants to eliminate DOS entirely. I hope it's just a rumor. BUT Windows 2000 could screw up ANYTHING we did, making it worse than Y2K destroying the earth. At least that would be a quick death.

MIS-READING INSTRUCTIONS & LUCKING OUT

I received a report from a client who misread the directions and lucked-out with a \$97 winner. Problem is it won't happen often enough for him to profit consistently.

What he did was to take BL/BL's Projected ODDS, the odds at which a horse should be going off based on the power of the program. These were NOT closing odds. Directions say to compare our PROJECTED Betting Line odds with the actual Tote odds and bet overlays accordingly; based on what YOU will accept as a minimum, not necessarily what I will accept.

What he did will sometimes pay off when the client has fully learned to utilize all of BL/BL's readouts. A lot of foreign clients have no choice but to use Morning Line odds. They are very selective and succeed because of their caution.

In this client's report he wrote "No Play - per Doc." NO! NEVER did I say or write that a horse should be HIDDEN based solely on the BL/BL PROJECTED odds. The are "Should Be" odds and the key to getting Overlays. ALWAYS hide based on REAL TOTE BOARD ODDS: Tim Brothers in England may have to be the exception.



The Gift

by The 'Capper

'Tis the season to show we care by giving gifts. And to receive gifts. What do you tell others you want? What do you get for yourself? Take a few minutes to think it over.....OK. Now

here is my suggestion. Give yourself the gift of winning. Once you give this gift to yourself you can use it over and over again. Christmas can be everyday!

Horse players are simply amazing. They attune themselves to any variety of "mainstream" theories and apply them in any variety of ways. When they continue to back losing selections they continue to go through the same losing process, achieving the same old results - losing. Then the law of averages steps in, and they win a race. Rather than trying to understand what they did right to get the winner, to repeat the winning event, they exult in their system and return to their same old losing pattern. They end up lamenting and whining that the horses do not run to their system. Imagine that. They want the horses to run to the criteria they have selected. Is this how you look at the races? Do yourself a favor and become a Wagercapper. Be a winner.

Magic? Clairvoyance? Luck? What are you looking for to reach the cashier's window? If you are looking or wishing for an external helping hand to isolate profit generating selections you are in for a long, disappointing and losing wait.

What do you NEED to win? Most of all you need yourself. You make the decisions. The cash through the windows is your cash, earned at some cost to you. Why give it away based on someone else's whim or supposed "inside information"? That money is too important to me to let me let anyone else invest it in a stochastic event like parimutuel investing.

What do YOU do that prevents you from being the winning 'Capper each day you go to the track or OTB? After all if you always handicap the way you have always done it you will win what you have always won. Or the converse is also true, you will always lose what you have always lost. Approach the races with the knowledge that you are going to win. And understand that it is YOU who is going to win.

Having done enough of my own muddling I share with you a couple of personal somewhat abstract aides to my Wagercapping. PATIENCE. I remember in the not so distant past how little time I had to handicap a card from the time the Form arrived at the newsstand until I was arriving at the track just before post time. Now with the advent of computerized downloading and the Validator I can get through an entire card in the time it previously took me to work a single race (about 45 minutes). I was impatient before to receive the Form to work a nine race card. I am impatient now to get through as many races as possible, somehow believing that

more is better. NOT SO. I learned that I must still spend the time to evaluate each race in its entirety before moving on. What good does it do to overlook a major factor or even a seemingly insignificant factor and lose a race even if I have handicapped another 20-25 races? It does not do any good. It is self defeating. Doc calls it the Thanatos complex or death wish. It is certainly a losing wish when I give in to it.

One of the joys I receive from handicapping, and I am sure you do also, is to see the important factors in the past performances and use them to enter the correct pacelines and contenders into the program. It is the solving of the mystery of who is going to win that thrills me. It is the collecting of the winners share that rewards me. However, there is the pitfall on the other side of impatience, doing a race too quickly, and that is spending too much time on a race. Overanalyzing a race can be just as deleterious to ones bankroll as under analyzing it. Doc's computer programs help out with this one. Enter the contenders, run the program and utilize the readouts. Simple. Easy.

How many questions can you ask yourself about the contenders in any given race? And how many times can you re-ask them? Will he get the lead? Will he break well? Will the outside horse press him? Is he fit off the layoff? Is he well meant today? Will a speed duel set it up for a closer? These are for the most part main stream questions. The computer will take care of them for me. I know that I can not win every race, even though I do not invest in a race with the thought of losing, it does happen. The computer sorts out the majority of the questions for me, and remember most of the questions are main stream ones which the programs take right out of the equation. If I am not comfortable with the contenders, I pass the race. It does little good to continue to obsess about contenders, trainers and infinite possibilities. Plus, if I am overanalyzing then it does start to cut into the time I have for the other races available in which to invest.

As a computer-using Wagercapper the worst time for me to overanalyze is not the night before the race or the morning of the race but in the time between races. It is this time when I review the next investment that I begin to look for insights that just are not there. OR I look at a race I chose not to invest in and again start to look for an unfindable key. This is a great time to input the data from previously run races into the Wagering Decision Form.

Forget the past. I mean leave behind your old handicapping axioms. Leave behind the par and time charts. Leave behind the 'authorities and experts'. Leave behind your personal biases. Yes, even leave behind yesterdays Methodology. Get with the new. Get with today's Methodology. Use what the Methodology gives to you, to each of us. Do not get caught up with trying to 'discover' the one nuance everyone has been seeking and has not found. Use what we have now, today. Change your outlook. Change your approach. Change the size of your bankroll.

This is the gift giving time of the year. It is also the beginning of a new year, a new era. As the year ends, allow yourself to make the changes necessary to being a successful Wagercapper. Give yourself the gift of WINNING. It can be a transformational gift. One that keeps on giving. One that sets you free.

The 'Capper here with a race day reminder....work the plan, be profitable.

Til next time.

GRINDING IT OUT FOR VALUE: A Client Profile

TERRI OWENS is a woman who, for many years has proven that Handicapping/Wagercapping is not for men only. While I'd love to see her make even more profit, her reports have been an inspiration. Like many others we've published they would also inspire those who are doing less well than some of those published reports. I'm looking at her forms covering just three weeks. In that time her Net Profit was \$787 or \$262.35 a week. Her bets were \$10 each on two horses to win.

Her profits may not impress some bigbettors or those with high expectations but what impresses me is her consistency and determination to be undaunted when a track produces a wealth of winning favorites. That was the story at LONE STAR during this period as shown both by how few winners she had in TIER ONE of BL/BL and the number of MISSES shown as a result of hiding low odds horses.

To me, another inspiring fact is that she toughed through a three week WIN PROFICIENCY of only 42%! This fact should provide comfort for those who once thought that 63% was minimal and 75% optimal. Those percentages are available still, but only to those who have learned the art of PASSING when there's no value. Of course a 70% win ratio is always there for clients who will accept virtually all winning odds. But getting 70% winners on underlays is not very profitable.

Terri O. also provided her BEFORE HIDES Readouts. Her profits were far less BEFORE she hid all horses with odds of less than 5-2. After much study, she's starting to PASS more races. If she concentrates just a little more on PASSING and not concentrating on just one track, she'll be betting less but grossing and profiting more!

As this applies to her, so it does to all of you who are complaining about too many low paying favorites

at many tracks. Learn to PASS.

I asked Mark Cramer how he is able to find Value Races by passing. He said all it takes is **practice**. I agree. I always thought I did it by *feeling*. But, when all is said and done, that feeling comes from lots of practice: of being wrong often enough to learn from mistakes.

I'm getting a little weary of people telling me about how many favorites they HIDE that are winning at various tracks. They imply that my 5-2 minimum odds are some kind of **rule**. I have said repeatedly that you must fix your own minimum to fit your own anxieties. If you cannot handle those anxieties and will accept less than 5-2, wager 60/40. It's not difficult to make one wager on a lower priced horse and the *other* on an overlay.

To date, all those complaining about their losses because of a bevy of winning favorites, have been focusing on one track, which at certain times of the year, is inviting trouble.

With phone betting becoming less legal everywhere (for the moment at least) bear in mind the DRF contains FOUR different tracks plus a few isolated special races. Utilize the internet or the Charts Issue of the Racing Form for result charts from tracks that show *fewer* daily favorites; wherebettors are less sophisticated and Racing secretaries are not carding races to favor low odds horses in order to get a lot of off-track business. Major offenders in this are Hollywood Park, Santa Anita, Del Mar and the Big Apple circuit.

Don't think problem. Think SOLUTION!

We welcome questions involving problems. Call the Tech Support line (909-845-1728). Ask **aloud** the questions to yourself first. If you can't answer yourself, e-mail (shane@discover.net), call or write.

Above all don't surf the net for answers from strangers. One client did this and got the kind of answers one always gets when appealing to strangers: *strange* answers.

THE FILLIES AND US OLD GRAY MARES

by Aline Best

First of all, for you gentlemen, if this page offends you there are at least 71 others to read so just pass it up and find something else. Better yet, read it then give it to the lady of your life to read. That is, if you think you can handle the competition.

NOW LADIES..... PAY ATTENTION.... It's time for us to stop "playing" with these programs and settle down to some serious Wagercapping.

We know from the many people who call in that anyone who is willing to truly follow the instructions for pace line selection and wagering can make money with Synthesis/ Wagering Decision Form or SMT

We also know that women are far better at following instructions than men. After all, who is it that's first to ask for directions when we get lost? Who reads the instructions for a new appliance first, rather than waiting until we can't make it work by guessing? Enough said!

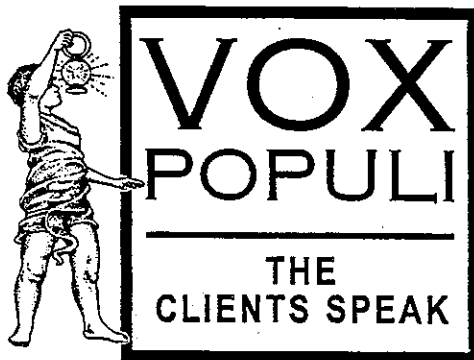
Now, instead of lingering around the edges of this handicapping business watching the old man, how about getting into some serious practice with the program. Read back issues of the Follow Up for instructions and PRACTICE. Use the Wagering Decision Form to learn how to select your bets and when you can see one 20 race cycle after another that would have produced a profit, head for the OTB or set up a phone bet account.

Now you may run in a to a problem with this. Even if we are working, or have worked outside the home, we seem to be conditioned to be homemakers first. In other words, we'll let the washing or cooking or the dirty dishes take precedence over what we want to do. This is the time to take a stand. Especially if you're phone betting. Let NOTHING, other than perhaps a bleeding kid, get in the way if you've done the races and decided to make your bets. If you do, you'll find that you took a "time out" for something just about the time you had three consecutive races with \$20+ winners in your top three tiers in Bottom Line/Betting Line.

Look at it this way. If you get this going and build your own bank roll you can hire someone to do the housework. Investing in the races is a whole lot more fun than scrubbing the floor.

OK now, get with it and let us hear from you. Send in those winning 20 race cycles. By the way, it helps Doc immensely if you mark your actual bets on them someplace.

If you need help, e-mail me at ohenryhouse@earthlink.net Just put ALINE in the subject line and it will be forwarded on to me. Or call the tech support line 909-845-1728 11:30 to 3:00 Pacific time.



Dear Doctor Sartin and Staff,

I hope that you are all well.

Seasons Greeting from New Jersey.

Please find enclosed a check for two more years of the Follow Up with first class delivery. It just gets here too slow by regular mail. They must walk it across the Rockies. As they say, no news is good news.

Synthesis just seems to find those overlays which make profits. The short report lets you sort out the contenders from the pretenders. Exacta's such as the fourth race at Hawthorne on 11/27/99 can certainly increase your profits quickly. Thanks again for putting fun back in equine investment.

L.P., New Jersey

Hello, dearest Doc and Staff:

Yes, please send me your latest masterpiece - The Validator. Enclosed is (my payment) to cover costs/tax and your speediest shipping. Any change, please have "coffee" on me! Someday in the not-too-distant I hope to take you all to lunch!! (Okay, dinner - let's dream big).

Thanks for the recent e-mail Doc, re: my multi track concerns. Have shifted from Bay Meadows (almost exclusively) to Penn National (for now). Getting off Bay Meadows and taking a look around has been very freeing. Am sure I'll be "shopping around" with ever more daring as I gain confidence and improve my recordkeeping.

Follow Up 77 was very helpful and clarifying. The time investment is perhaps my biggest challenge at present - and/but your comments re: "compartmentalizing" and "will power" hit home.

Thanks for everything! Most especially your steadfast dedication and commitment to excellence and service.

Take good care, one and all, and
Happy Holidayze...

C.L., California

Hi Doc,

I can't believe there's people out there that can't pass races. With the programs you develop you can download two tracks and do them in about one hour. This is a great advantage for us to pick and choose what races we want. Anyhow, I pass races with:

- 1) Maidens with more than one FTS
- 2) Maidens on the Turf with no Turf lines
- 3) Turf races where there are European horses with no running lines
- 4) When two horses have the corollaries I'm looking for but don't meet my price

Thank you and keep up the good work.

G.R.F., Pennsylvania

Dear Mary Jr. et al,

Enclosed is (my payment) for my renewal of the Follow Up.

Without a doubt it is the best racing publication in America. Without it, it would be like trying to sail a ship without a rudder.

Everybody take care of yourselves and stay well.
V.V., New York

Dear Dr. Sartin,

I am not having any problems with PL4. It's a great program.

My problem is I suffer from Depression. I have a lot of trouble thinking straight and concentrating and making decisions. I hope to get better.

Initials and state withheld

DOC COMMENTS: Depression is the most common disorder in the U.S. Unipolar Depression is easier to control than Bi-Polar Disorder. But there is NO single medication that does the job. Medication must be tailored to the individual biochemistry. Prozac is not the universal answer, nor is the General Practitioner the one to do the prescribing. See a qualified psychiatrist. Your anxiety may be purely functional, with no chemical imbalance. Handicapping itself often triggers anxieties, that when agitated mimic depression.

Shane:

BL/BL killed Silverbullet today.

Fantastic!!!!!!!!!!!!!!!!!!!!

S.C., Virginia

Dear Howard,

Hope this finds you and Family happy and healthy.

Tremendous and Sincere thanks for everything, especially 'being there' I love Synthesis, use it most days. I am personally convinced it's the best thing for results, ROI, that you have ever done. I tell anyone that will listen. You have it down to just about an exact Automatic science. If they can't win with Synthesis, they simply don't want to ... but you already know this.

I will continue to talk about your Revolutionary work, as well as Synthesis as always, because I believe. Anyone that is really interested in Handicapping Investing 'must' get in touch with you, or... they can't win. You made the tough game beatable. You did revolutionize it. Anyone that's been paying attention has to recognize this. With respect, others are fools. ...

I still listen to Seminar tapes in bed a few nights every week. I just love them. Some of the most valuable and important information ever imparted are on those tapes. I listen to them over and over, for 20 years now. You are so inspiring. People don't know what they are missing. I do. You are a true genius with never-ending Energy (no pun) and vitality and drive. You amaze me and I'm certain thousands of others.

I, for one having been around and loyal since 1981, realize (and always did) how terribly you have been taken advantage of over the years. Your tough in a Positive way (losers aren't), don't like excuses, but are far more than fair and have one of the biggest hearts of anyone I have had the privilege of knowing in my life. If there is a God (I was raised a Catholic), I thank him so much for pointing me in your direction...

E.A., Nevada

FROM A VALIDATOR TESTER:

Hi everyone,

Hey Doc, used the 'improved version' for the first time this weekend...it seems to GET more winners!! While it could be the exceptional run of PL selection, I strongly suspect it has more to do w/ program improvement.

Will keep you posted.

Best, D.F., Washington

DOC COMMENTS: This was an early report from a beta tester of the new Validator program. As with other testers, he found the versions produced after Follow Up 76 superior. One further improvement was made after this report.

FROM THE E-MAIL:

I just returned for Gulfstream Park for the Breeders Cup, and I played the Friday and Sunday cards and the following is my conclusion. The adjustments that you're making for Calder horses is making them too fast. The only races Calder horses were winning, even though many times they looked like contenders, was when the field was dominated by Calder horses in terms of the number of entries. Your speed ratings in CA are definitely more accurate. The turf numbers are especially fast. I download Trackmaster pp and run them thru a Sartin program. I hope your reply isn't that the horses were outclassed?

J.S., Florida

DOC COMMENTS: NO, we don't reserve Vox Pop for compliment only. This is the first of such complaints we've had from Florida. Other communications are all positive. But, if anyone else finds the content of this letter similarly affecting you, let us know. We'll do something about it. Another Florida client WON \$37,000 at the Breeders' Cup with Synthesis.

Dear Doc and everyone,

I have been using my new Validator program for about 3 days now. I cannot believe how incredibly easy it is to use.

So far I'm just practicing, but I'm getting more winners. Can't wait to get to the betting window.

Thanks. This was the program I needed. I love Synthesis and maybe someday I will be the type that loves to analyze and check all those corollaries. But for now, I just want to win and Validator has all the checks and balances I need.

Thanks for a great program

F.G., California



Total Energy: New Discoveries from a 1000 Race Test

Continuing the Total Energy Test we reported in Follow Up #76. we have now, with the aid of Beta testers, added 400 races to the 600 on which we reported in the last issue. The test was initially one to determine the power of Total Energy. The last 400 races tested the viability of the TOP 5 (and ties) Total Energy horses in concert with our new program: Sartin: 2001 with the VALIDATOR. In the first 600 races only 12 horses won with a TE Ranking over 5. 98% WON their race.

In a six month 400 race test of just the VALIDATOR portion of Sartin: 2001, only eight horses that were not in the top 5 and Ties in Total Energy, crossed the finish line first .

To clear up any confusion I must state that all Total Energy Stats were based on the winner being included by the user in the Top 5 and ties in the PRIMARY READOUT Rankings on Super Screen in SYNTHESIS or the VALIDATOR V/DC screen.

There were very few occasions when the Beta Testers did not include the winner. However, we still have a few clients who insist on qualifying contenders by old guidelines. They do leave out winners more often than those who follow current instructions.

For the initial test, ***no horse*** was HIDDEN based on odds. All that qualified by our Best of Last Three COMPARABLE were included. This was to avoid the possibility that EARLY horses, often the favorites, would be discriminated against.

In finalizing the test for wagering purposes, horse with odds of less than 5-2 were hidden.

I must stress, the test was for WIN only. This is why low odds horses were eliminated before wagering. Place horses did not fare quite as well on Total Energy as did winners. Show horses did extremely well. Yet, *more* Exactas were won than by Synthesis or BL/BL alone.

In this particular research I eliminated myself as a tester, both of Total Energy and the VALIDATOR. The names of most of the VALIDATOR testers are listed in my White Paper on VELOCITY & DECELERATION. Guy Wadsworth handicapped about 50 races in helping me to improve the VALIDATOR screens (see Follow Up 77). In this issue we show races from several testers, including Aline Best.

As in testing the power of Total Energy itself, I wanted the test to be dominated by the results of races done by clients. For the purpose of speedy results, the vast majority of the races were

downloaded from TrackMaster since in our download version all races are automatically Adjusted, Normalized and Equalized.

A few were hand entered from the DRF. The hand-enter program will be included in the VALIDATOR package until January 24, 1999 (special price has been extended). With technology reigning so supreme and the TrackMaster download so powerful, it's like pulling teeth to get a programmer to make hand-entry versions. I still like to hand-enter occasionally. It helps to keep my skills sharp and it's something to do to keep me occupied between races when I don't have time to download or "handicap" before going.

Having stressed the fact that the Top 5 (and ties) in Total Energy have such a powerful win potential, I must now offer a caveat:

**DO NOT DETERMINE TOTAL ENERGY based
on the readout from your Energy Generator.
HIDE all but the top 5 (and ties) from the
PRIMARY COROLLARIES on the
SUPERSCREEN.**

When examining losses sent to me by clients, I find that they occur most often when they fail to reduce a field to a maximum of SIX (top 5 and ties) on PRIMARY Rankings. Choose from these horses (FOR WIN ONLY) based on our instructions for Contender/Paceline selection.

For some it seems that it's hard to limit contenders for win to those with the top five and ties or even six SR's and ties on the TrackMaster download or from hand entry. It is also just common sense to employ a little practical experience in the area of seeking horses from COMPARABLE distance, Track, Surface and COMPETITION LEVEL.

Focus on "Comparable."

People ask us "what does 'competition level' mean?" Until they, themselves, can answer that question with at least a degree of confidence, I suggest they stop betting and wasting money that should be used to support their families, until they do understand. It was never intended that this Methodology should lure people into horse race betting. It is designed to help those already so lured. Some understanding of Competition Level should be an integral part of every aspiring handicapper's background of knowledge.

All VALIDATOR testers followed the essential guidelines for picking contenders and pacelines **as directed**. Just because 96.6% of all winners were in the TOP 5 TE, does not mean that any tester won 96% of the time. However, several won over 80% of the races they tested.

So can you.

76% of the winners ranked in the TOP 3 Total Energy. 14% were ranked 4th, 6+% were fifth. Total in the top 5 and ties 96+% in 1,000 races as compared to 98% in 600 races.

Those testing the VALIDATOR profited from more winners than they did with Synthesis alone because the VALIDATOR erased *all doubt* about which two horses to win bet.

I must admit, however that all testers were not enchanted by the ease with which the VALIDATOR got winners and profit. One felt it took away from his perceived ability to use his own intellect to analyze races. The VALIDATOR can be a blow to the ego of anyone who still believes that it *must be their own analytical skill* that makes them successful. Or, in some cases, not consistently successful. They win just enough to assuage their ego. I applaud them as long as they're satisfied with what money they are making.

This test was also undergone just to see if clients are really doing as most claim; have overcome their subjective handicapping and any need to worry about picking proper contenders and predictive paceline. Many have succeeded, at least to their satisfaction. Some are less certain about their mastery of the art of interpreting the corollaries in Synthesis and the optimal use of BL/BL.

This latter group is flocking to the VALIDATOR

Those who have not still face an unfortunate ego-based desire to be "Handicappers" by the classic definition of the term. The same kind of ego-based mentality that caused 11 of 12 Daily Racing Form "Experts" to miss Charismatic in the Derby, Preakness or even in the Belmont where it broke down. Beyer even gave it the TOP Figure in his Daily Racing Form Figures, but said the horse was a "fluke."

THE TURF INVESTOR

Picking Winners or Playing for Value?

by Frank Cotolo

According to one source, the followers of Howard Sartin had also chosen Charismatic to win through their pace and energy formulas. The Sartinists were in the minority, which benefited them to the hilt.

The point is that most people, from Andy Beyer to Andy Capp, had any number of good reasons to look past Charismatic.

DOC COMMENTS: This is from an article in American Turf Monthly. That one source was Mark Cramer, a friend of Cotolo's, who learned the fact from Mike Helm, who had Charismatic using Synthesis. Mark sent me an e-mail of congratulations even before I arrived at the office with the Win money.

That source was Mark Cramer.

If you're not seeing the bulk of your winners coming from TE rankings of from 3 to 5, with MOST in the TOP 3, you're entering horses that **don't** belong or you're not using just the TOP 5 and ties SR contenders or the BEST of the last three lines at a comparable, distance and surface and Class—and by Class I mean TOTAL ENERGY. What I DON'T mean is adherence to MINOR differentials in Claiming Prices or Allowance purses.

If you're failing to get most medium priced winners in the top 3 Tiers of BL/BL and the rest within the top 4, or the occasional big hit in 5, PRACTICE. You're putting in at least one horse that does not qualify by the directions followed by winners. If, for some pet reason of your own, you're leaving out a lot of winning horses, you should get in touch with the office. Your problem can be corrected.

I use the new program ~~because~~ because it's so quick and effective and does not clutter my superannuated mind with the need to ponder over all those Interpretive decisions I liked to make when I was younger.

MAN MADE CLASS FIGURES & OTHER SOURCES FOR DOUBT

*Too many players
are obsessed
with the idea
that claiming prices
are clear-cut indications of class.*

RAY TAULBOT

There are some common sense ways to use Claiming prices and Allowance Purses that are not dependent on Total Energy. Two I've encountered recently include a horse that had won two races several months apart; one at \$10K Claiming, the other at 8K. Today it was running in a 30K Claimer. In 7 of its 10 PP races it had tried winning at 20K, 25K, 32K and 36K. It failed miserably at all attempts other than at the 8 and 10K level. The other case involved an Allowance horse with a similar profile. It had won one Low Purse Allowance and a 12K claimer. In ALL of its other races it had failed badly each time it tried to rise above these lower levels. These horse may occasionally win, but not enough for you to worry about.

Just so you fully understand, I'm referring only to extreme gaps between the levels where a horse fails or succeeds, not minor ones of one level or even two. Some will declare that I'm giving way to mainstream logic. No, it is just plain experiential fact that you can validate for yourself with a little research.

Why not answer some of your own nagging questions by re-handicapping the races you lost?. Do it on dark days. You'll be surprised how much you'll learn and how many mysteries will dissolve. Remember the sage words from Tom Brohamer when he said that he *learned* more from *answering* questions that he did from asking them.

I think I should repeat the fact that the results of our Total Energy Test came from clients who made sure they had entered horses that were the actual TOP 5 (and ties) in Total Energy among truly viable contenders. That is not the same as your own personal, subjectively determined, top 5 TE horses. If you're defying our so often printed instructions, making personal ADJUSTMENTS, or subjective "discoveries" that have no long range profit consistency, then you should accept the fact that your research results are tarnished.

Some non-winners are still entering horses that are extremely below the class-purse level of today's competition. This does not mean you have to enter every horse. I've never entered every horse except for purposes of demonstration. With a little practice you'll get a feel for the top 5 Total Energy horses. They become quite obvious when you examine their pacelines. Sometimes you will have to view more than ONE paceline for the same horse to get a true picture of its Total Energy.

I just did 8 races of a card at Bay Meadows. In each race I entered at least TWO pacelines per horse. I was surprised several times by the fact that the line I thought was superior was NOT the correct one. NO ONE is beyond learning something each day. I don't usually have to enter two or three lines for a horse, This race was an exception. However, considering the number of clients and tracks, such exceptions are more frequent than you might think.

When eliminating ALL but the top FIVE (and ties) ranked horses under R in the PRIMARY Corollaries, you will see NOTHING on the VALIDATOR except the top five (and ties, if any) TE horses. This factor alone makes your wagering decisions much easier to make.

Those who download because they prefer convenience and speed are the ones most likely to overlook valid contenders. Downloading is great, but do it with the same care I trust you would take when perusing the Daily Racing Form.

Very few have such problems. But those who do are losing and doing nothing to correct the ego-centered subjectivity or old outdated rule orientations that keep them from consistently winning. A few non-winners with high IQ's are constantly experimenting, looking for ways to avoid my guidelines. They should confine their bets to \$2 OR get a job with a University or testing firm where their talents might pay off, not risk their income at the races.

One client went from downloading via TrackMaster to BRIS because he wanted to make his own adjustments and use the BRIS paceline marked with an asterisk. Unless he's rich, I predict he'll end up losing much more than he can ever afford.

SUMMARY: Look at the contenders you've entered in your computer. Have you eliminated all but the top 5 (and ties) TOTAL ENERGY horses from the PRIMARY COROLLARY RANKING, or the VALIDATOR V/DC? Or are you relying on some sort of "pattern" you think you've discovered involving some specific readout or Balance or the old "Pace Setter" myth or some other factor?

If your "patterns" produce a consistant profit at all distances and surfaces, let me know. You win the prize. Otherwise you get the booby prize. Some claim they "like" to analyze races but in truth they are over-analyzing. My experience with aspiring handicappers has demonstrated conclusively that what one "LIKES" is seldom what works. When someone tells me they "Like to—" they're really saying "I like to cling to my old ways even if they don't win. I'm used to them and to NOT winning." Sad but true.

Then there are those who wake up with a new "Discovery" every day or so and are probably having more fun than the rest of us. That's okay as long as they're not betting enough so that their losses put a strain on their income and the needs of their family.

TESTERS - TOTAL ENERGY or VALIDATOR

I'd like to thank many clients for contributing the data used in our TE and VALIDATOR Tests. Special thanks goes to Vern Williams. Gary Gilbert, Randy Atkins, B.L.M., Tommy Gayer, Patrick Bryk, Robbie Robinson, Henry Heieiczeder, Dennis Mikkelson, Fred Tanaka, K.C. Jones, Ruel Burns, Mary Gionet, Carl Kelling, Michael Wong, Barbara Reynolds, Dick Fritts-BOTH TESTS, Tom Spiegelman, Nick Lonzifero and Steve Schmidt - plus all those I may have inadvertently left out..

In gathering data a lot of the names of contributors were lost. Any future contributions to this, or any other study, will be duly recorded and credited.

IMPORTANT REMINDER:

Do NOT hide horses from the Total Energy readout on the ENERGY GENERATOR.

HIDE from Primary Readout Rankings.

They will often produce a positive change in the top[5 (and ties) TE horses.

This is an extremely VITAL direction. Please follow it.

Missing something?

- Issue #59 ~ Introducing Pace Launcher with new Pace Line Selection Guidelines
- Issue #60 ~ The Era of the Corollary with Sartin Glossary of terminology
- Issue #61 ~ Value Wagering and advanced Pace Launcher corollaries, Pace Launcher 4
- Issue #62 ~ Step by Step instructions given in detail for a full 9 race card
- Issue #63 ~ Answers given to ALL problems encountered prior to this issue
- Issue #64 and # 65 ~ Both issues are dedicated to helping you make profitable Decisions
- Issue #66 ~ Introduction and explanation of Synthesis
- Issue #67 ~ Benefits unique to the TrackMaster download and Money Management
- Issue #68, #69 and # 70 ~ Exploring TODAY'S realities in Handicapping Success and how they differ from the past.
- Issue #71, #72 and #73 ~ An objective testing of our Bottom Line/Betting Line with real money by Mark Cramer.
- Issue 74 ~ First of the Cracking the Corollary Code series, Art & Science of Passing Races
- Issue 75 ~ WAGERCAPPING issue
- Issue 76 ~ WAGERCAPPING pt 2 - Diagnostics, Prognosis & Treatment
- Issue 77 ~ THE VALIDATOR includes the White Paper by Dr. Sartin

..... **Back Issues of the Follow Up are \$12.50 each**

CRACKING THE COROLLARY CODE

in the NEW VALIDATOR Program

The program is actually called Sartin 2001: A PACE ODYSSEY. However, The VALIDATOR has become the title of choice for its users, so I'll use that title whenever discussing it.

In Follow Up #76 I wrote that every other program we've produced, the formulae is derived from the three Incremental fractions of a race, nothing else. A lot of people have trouble believing that so much complexity, including DECELERATION can be extracted from three fractions of pure velocity. As I said before, it's what we do with them that makes the difference.



In Follow Up #76, I went through various graphs, primarily used in SYNTHESIS, that we had not addressed previously. Now, it's time to delve into a complete explanation of the corollaries and graphs in the VALIDATOR.

The ENGEN is included in the VALIDATOR program and was explained in detail in Follow Up #75. Here's a copy of the Engen that got CRIS, the \$41 winner at HOL, Nov. 28, 1999.

HOL1128- 6 7.5D \$100,000
ENERGY GENERATOR

#	PNCNAME LdNT	SR	Total R	HE R	Fx R	%Med	E/EP R	L/EP R	TPP R	BAL	ESP
1	1 CHICH ₃	91	171.14-1	82.5-2	57.0-1	68.5	96.1-1	93.4-5	91.3-1	6	PRE
2	3 BRIGH ₂	86	168.39-3	81.6-3	55.2-4	68.5	94.6-3	93.8-3	90.7-3	6	PRE
3	4 CRIS ₂	85	168.93-2	84.0-1	55.3-3	68.1	94.6-2	94.2-2	90.9-2	4	S/P
4	6 CENSO ₁	83	168.00-4	79.5-5	56.0-2	68.1	94.2-4	94.2-1	90.7-4	5	S/P
5	7 SPECI ₂	81	167.18-5	79.8-4	54.6-5	68.8	94.0-5	93.6-4	90.3-5	9	E/P

%MED of 70 or More May Indicate Excessive Early -- Check Your Records

Note that CRIS ranked 2nd on Total Energy, 1st on Hidden Energy and 2nd on both Early and Late Energy POTENTIAL as well as on Total Pace Potential. It has a Balance of 4, best of all. The Median Energy percentages of all the contenders was so close it made the figure meaningless. Median Energy was **once** a potent tool. Now it's *yesterday's* news. Why the public allowed this horse to pay \$41.80, may be a mystery to some. The VALIDATOR ranked the horse 2nd.* No surprise to us but it rankled some of my mainstream acquaintances.

*For complete set of readouts and mutuels, see page 29.

BOTTOM LINE BETTING LINE

While it is slightly improved in the VALIDATOR, its use is the same as in previous instructions.

BOTTOM LINE -- BETTING LINE

PN	CNAME	LdNT	SR	PR	BAL	LS	TIE	ODDS	TRKDIST	M/L	DAYS	AGE	
5	BREAK1		78	70	2	22.8		EVEN	HOL 5.0D	5/1	36	2	
9	SMART1	1	75	70	8	20.5		9-5	GG 5.0D	8/1	47	2	
6	GILLY1		73	70	7	16.8		3-1	HOL 5.0D	12/1	16	2	W
2	BORN 2		72	68	5	16.8		3-1	HOL 5.0D	6/1	26	2	Sh
3	EMERA1	1	72	70	8	15.3		7-2	GG 5.0D	4/1	47	2	

There are aspects of BL/BL that some are **not using to full advantage**. PN is Program Number. L stands for the Pace LINE you used to handicap the horse. Under d You will see nothing unless the horse was a router and the line was Xtracted into a 6 furlong Sprint from a Route line. If a horse is projected INTO a Route from a Sprint it will indicate p. N will show a number, *If* you used the NEED TO LEAD function. T, if you numbered Tandem Lines. For One Tandem use 1. For **MORE** than one Tandem, designate by using the next higher number(s).

SR: is the Methodology Speed rating that conforms more to the DRF SR than the Equibase SR from which we adapted it.

PR is a TrackMaster figure for Performance Rating that I ignore. Some people like it so we left it in.

Above the PR figure is TrackMaster's number for a class rating of the race itself. Use these numbers at your own risk.

BAL: shows the balance of the line you used. Low is best. It is a valuable tool in all but TURF races where winners often have a BAL of over 8.

LS is Line Score. High is best. TIE will show an asterisk next to any horse whose LS is TIED with another regardless of order. To date we have yet to see a single digit line score for a winner if it was entered into the computer.

ODDS represent the odds at which the horse SHOULD BE GOING off based on the POWER OF THE PROGRAM when DIRECTIONS ARE FOLLOWED. We still have users who think the are ACTUAL odds and use them to find overlays. I repeat, **these ODDS reflect the power of the program and should be used to compare against REAL Tote Board Odds to determine overlays.** How often have we seen a horse listed as EVEN that paid 12-1??

TRK DIST: The track and distance from which your paceline came.

M/L: is the ACTUAL program Morning Line.

DAYS: The number of days since the horse last raced.

AGE: The age of the horse.

THE SUPERSCREEN

This "SUPER" value screen has been included in the VALIDATOR. Original Instructions still apply.

SYNTHESIS. POWER RANKINGS AND FRACTALS

				L	T	PRIM										SUPP					FRACT					
#	PNCNAME	LdNT	SR	P	T	E	L	C	T	H	F	F			S	F	E	T	T			E	L	N	ESP	SCBL
						P	P	P	T	E	W	X	LS	R	N	X		S	P	LS	R					
1	2 BORN 2		72	5	2	2	5	5	1	2	3	5	23	3	4	5	4	2	2	17	4	5	2	3	PRE	
2	3 EMERAL 1		72	1	5	5	2	4	3	3	5	4	26	4	5	4	5	5	5	24	5	4	5	4	E/P	2.0
3	5 BREAK1		78	3	1	1	4	1	2	1	1	1	11	1	1	1	1	1	1	5	1	1	1	1	PRE	
4	6 GILLY1		73	4	3	4	1	3	4	5	4	2	23	3	3	2	2	3	3	13	2	3	3	2	S/P	4.0
5	9 SMART1 1		75	2	4	3	3	2	3	4	2	3	20	2	2	3	3	4	4	16	3	2	4	5	E/P	

FRACTALS WEIGHTED: E=Early L=Late N=Normal

GILLY won this race, paying \$124.80. As you can see this is an AFTER HIDES printout. The odds on the Place Horse were only 2.3-1 The horse was hidden FOR WIN ONLY. Exotic bettors must play close attention to these low odds contenders since they so often PLACE. The SHOW horse was included because its odds were 8-1.

For WIN only bettors, the first step is to narrow the field to the TOP FIVE (and ties) contenders ranked under R after the Line Scores on the PRIMARY Corollaries of the Superscreen.

6-GILLY'S GHAZI	3	2.60	2	2.50	2	2.00	1	0.00	70	61.40
1-IM TOUGH ENOUGH	1	0.00	1	0.00	1	0.00	2	0.50	69	12.30
3-EMERALD PENDANT	5	4.20	5	4.20	3	3.50	3	1.00	68	8.00
9-SMARTER IS BETT	4	2.70	3	2.60	4	3.60	4	3.00	66	4.20
1-MANTILLA	7	7.30	6	8.70	6	8.60	5	7.00	61	6.50
8-STORMIN' NANA	6	7.20	7	9.70	8	9.70	6	8.30	60	22.40
7-LET'S PLAY GIN	9	10.80	8	9.80	7	8.70	7	8.50	59	16.40
5-BREAKFASTBLUBB	2	2.50	4	2.70	5	6.10	8	8.60	59	2.60
2-BORN TO BE SPOI	8	9.80	9	12.30	9	14.70	9	17.60	48	15.20
TIMES:		22.2		46.0				105.6		

HIDE FOR WIN ONLY

Note that AFTER HIDES, GILLY is in TIER #3 of BL/BL but moves up to being ranked tied for SECOND on the VALIDATOR. Breaking ties is easy: inserting ? or * next to horses is one way that users find helpful. Ties can also be broken by odds, GILLY was 61.40-1. SMART went off at 4.2-1. You can also break ties using the readouts for TOT, TPV. In this case it wasn't necessary for the Wagercapper. GILLY is an automatic bet. A number of horses in the 3rd or 4th Tier of BL/BL will rise to #2 or even #1 on the VALIDATOR and the Incremental Pace Match UP Graph. More often there will be agreement, giving you another VALIDATOR.

Once again, on the Early-Late Graph, as with so many OVERLAYS, GILLY ran Late. Its Early Late graph arrow points to Medium Late, which is typical of 5 and 5.5 furlong winners by the formulae used in our Methodology. The public, maybe even you, think that EARLY horses win at these distances. What is often overlooked is the fact that at 5.5 furlongs, there is only one and a half furlongs left to be run after the 2nd Call. It in this increment where the majority of these shorter sprints are won.

THE VALIDATOR

PNCNAME (L)INT	TOT-R	TPV-R	TDC-R	V/DC-R
2 BORN 2	2	3	3	3
3 EMERAL 1	5	4	5	4
5 BREAK1	1	1	1	1
6 GILLY1 ✓	3	2	2	2
9 SMART1 1	4	2	4	2

INCREMENTAL MATCH-UP GRAPH

# PNCNAME L	1F	2F	3F+TOTAL PACE
1 2 BORN 2	5-->	1-->	3-->
2 3 EMERAL1	2-->	3-->	4-->
3 5 BREAK1	3-->	2-->	1-->
4 6 GILLY1	4-->	4-->	2-->
5 9 SMART1	1-->	3-->	2-->

# PNCNAME Ld M T	LATE EARLY L	TOT R
1 2 BORN 2	1.5	166.2 2
2 3 EMERAL 1	-9.2	165.0 5
3 5 BREAK1	1.3	167.3 1
4 6 GILLY1	-8.4	165.5 3
5 9 SMART1 1	-4.5	165.4 4

EX-L V-L M-L <E> M-E V-E EX-B

A few clients remain indoctrinated with the idea that Early Pace always dominates in every sprint regardless of the number of furlongs. For them that indoctrination would eliminate the winner in this race. Those who have accepted my thesis that shorter sprints worth a wager are often dominated by LATE, saw that GILLY was #1 LPR, #2 on FX and FRACTAL N.

GILLY was tied on the VALIDATOR with SMARTER at 4.2-1. Those choosing not to attempt any interpretation should bet BOTH. BREAK, ranked #1 would only pay \$7.20 to win, so the timid could also bet this horse and still make a lot of money. My problem with BREAK is that it runs EARLY, counter to long range statistics for this distance. It is also ranked a low 4th in LPR but FIRST in EPR which is why it went off as second favorite. The public, was again mislead by visual perception and mainstream gibberish about "Early".

There is no way to keep BREAK from ranking first in all VALIDATOR categories. However there IS a way, for those choosing to do a little interpretation, to break the tie between GILLY and SMART. I explained it before, but here it is in detail.

THE VALIDATOR

PRGNAME (L)INT	TOT-R	TPV-R	TDC-R	V/DC-R
2 BORN 2	2	3	3	3
3 EMERAL 1	5	4	5	4 ³
5 BREAK1	1	1	1	1
6 GILLY 1 ✓	3	2	2	(2) W \$124.80
9 SMART1 1	4	2	4	2
SCRATCHED (NONE)				
6-GILLY'S GHIAZI			124.80	35.00 9.00
4-IM TOUGH ENOUGH				4.60 3.20
3-EMERALD PENDANT				5.00
Exacta	6-4		✓ 292.90	
Quinella	4-6		✓ 208.80	
Trifecta	6-4-3		✓ 1,615.10	

I'M TOUGH, The place horse, is HIDDEN for WIN ONLY.
based on LOW ODDS. Exotic Bettors should consult
readouts both BEFORE and AFTER HIDES.

Smart is 4th ranked on TOTAL ENERGY, tied for 2nd on TPV (Total Pace Velocity), but 4th ranked on TDC (Total Deceleration) In other words, the horse decelerates quite rapidly whereas, GILLY ranks **second** and owns the **best** final fraction.

The first three columns are for those who like to do a little interpretation. For most, I recommend using the V/DC column and the Incremental Pace Matchup Graph in concert with BL/BL. In this case, and in many others, the V/DC and Matchup Graph ranks the winner somewhat better than BL/BL, but since it paid \$124.80, that small difference is of little importance.

The testers and myself have found that when BL/BL and V/DC disagree, the consensus is: Go with V/DC. However you'll seldom find a difference of more than ONE between the two.

USING THE COMMENTS READOUT

This is a **new** element that is saving users a lot of grief and money. In Synthesis you could use the ? when you had doubts about a horse and the * when you felt it could not be overlooked. But, you had no way of remembering WHY you used the ? or * option. **Now you just hit F9 and make a note to yourself giving your reasons.** It will appear on your printout. See some of the races in this issue where the option is utilized to great advantage.

A good example of the VALIDATOR's coup de grace option for decision making is the ability for you to make **Comments**, positive by marking with a * (star), or negative using a ? (question mark).

For an example we'll use that 1st race at Calder on 7/17, 7 furlongs, won by NICK who ranked TIED with J.T.'s for FIRST on the Validator. NICK paid \$21.60 to win; NORTH paid \$6.20 to Place. J.T.'s is still running. The Exacta paid \$73. You can comment on as many contenders as you choose. In this example, a comment was made on both of the tied horses along with the Place horse, NORTH.

- ? J.T.'s lost 7 of last starts. Finished 2nd 3 back but a 5/5 fur. Today is 7 fur.
- * NICK finished strong 3rd in all 3 last starts at TODAY'S distance
- * NORTH does well at TODAY'S 7 fur distance

Note the comment on J.T., tied for #1 on the validator. This notation alone should steer you away from J.T. It lost 7 of its last but finished 2nd 3 races back at five and a half furlongs.

The winner, NICK, finished 3rd in all of its last three races at today's distance. The only other horse that did well at 7 furlongs was NORTH who placed, keying a \$73 Exacta. If your records for your track(s) show that 5.5 furlong horses fail at 7 furlongs, this comment alone could inspire you to eliminate J.T. The person who handicapped this race is now kicking himself for even including J.T. at all. Its only good recent line was 3 back at 5.5 furlongs. In its last two races it lost by a total of 24.8 lengths.

With the insertion of the **Comment** screen, along with using it properly, we found it much easier to pick predictive pace lines, separate TIES, eliminate horses, and PASS races.

CRC0717- 1 7.0D \$22,500

BOTTOM LINE -- BETTING LINE

PNCNAME	LdNT	SR	PR	BAL	LS	TIE	ODDS	TRKDISTS	M/L	DAYS	AGE	
*2	NICKT1	85	85	7	20.5		9-5	CRC 7.0D	6/1	19	4	W
7	SUNNY1	86	80	7	20.3		9-5	CRC 6.0D	5/1	15	3	
7	1 J T'S3	85	83	7	17.5		5-2	GS 5.5D	15/1	13	4	
*5	NORTH2	85	81	5	16.5		3-1	CRC 7.0D	4/1	28	3	P
3	CLASS2	83	84	4	16.0		3-1	CRC 6.0D	3/1	21	4	S

SYNTHESIS POWER RANKINGS AND FRACTALS

#	PNCNAME · LdNT	SR	L	T	PRIM										LS	R	↓	SUPP										FRACT			RSP	SCBL
					E	L	C	T	H	F	P	X	S	F				E	T	T	P	LS	R	E	L	N						
1	1 J T'S3	85	1	5	5	1	3	5	1	4	1	20	5	3	1	1	2	5	4	15	4	3	5	2	S/P	6.0						
2	2 NICKT1	85	3	2	2	4	2	2	2	1	4	17	3	1	1	4	3	3	14	3	5	3	5	E/P	1.0							
3	3 CLASS2	83	4	3	3	3	5	3	5	3	3	25	5	4	3	4	1	1	13	2	2	1	1	PRE	2.0							
4	5 NORTH2	85	5	1	1	5	4	1	4	1	5	21	4	5	5	5	2	2	19	5	4	2	4	E/P	2.0							
5	7 SUNNY1	86	2	4	4	2	1	4	3	2	2	18	2	2	2	1	4	3	12	1	1	4	3	E/P	2.0							

FRACTALS WEIGHTED: E-Early L-Late N-Normal

? J.T.'S Lost 7 of last starts. Finished 2nd
3 back but a 5.5 fur. Today is 7 Fur.

* NICK Finished strong 3rd in all 3 last starts
at TODAY'S Dist.

*NORTH Does well at Today's 7 fur. Dist.

THE VALIDATOR

PNCNAME	LdNT	TOT-R	TPV-R	TDC-R	V/DC-R
1 J T'S3		5 ✓	3	2	1
2 NICKT1		2 ✓	1 ✓	1 ✓	1 ✓
3 CLASS2		3	2	5	5
5 NORTH2		1	4	4	4
7 SUNNY1		4	1	3	2

CRATCHED Oil City
2-NICKTHEHOUSEBUSTER
5-NORTH PICK
3-CLASSY CAPOTE

21.60 8.20 4.60
6.20 3.60 3.80

Exacta 2-5 73.00 ✓
Trifecta 2-5-3 336.00 ✓

INCREMENTAL MATCH-UP GRAPH

#	PNCNAME	1P	2P	3P+TOTAL PACE
1	1 J T'S3	2->	5->	1->
2	2 NICKT1	5->	2->	1->
3	3 CLASS2	3->	3->	5->
4	5 NORTH2	4->	1->	4->
5	7 SUNNY1	1->	4->	2->

I am happy to report that most winning clients have given up trying to thoroughly analyze races as they were able to do with varying degrees of success in the past. That was handicapping. While a few clients and the majority of the public are unwilling to accept it, classic handicapping is truly archaic. Of all the famous names in our little world, Tom Ainslie was the first to accept this as fact. Other alleged experts go on making a living by selling selection services and doing trackside seminars where they have little success in picking winners other than favorites and near favorites.

Some clients still insist upon trying to handicap as they did in the past. Many things that affect our lives have changed in the past decade. Medicine, physics, philosophical concepts about race and prejudice, and virtually all of technology would go unrecognized by someone stuck in a time frame even as recent as the 1980's. Yet I receive mail each week from people who will not accept the fact that what was once known as "Handicapping" has changed just as dramatically as these other fields.

This constitutes "DENIAL," the same kind we find in alcohol and drug addicts and yes, pathological gamblers. Denying current reality in any field is tantamount to failure. Yet, all of our non-winners persist in doing it: Mixing archaic procedures into a state of the art computer program, thinking they can matchup horses by visual perception when they're already matched up by the program. Trying to MODEL corollaries when we've provided ample evidence that EACH Primary Corollary, by itself, Ranks winners with an average of UNDER THREE. Stubbornly insisting upon trying to ADJUST a program in which pacelines are automatically adjusted, normalized and equalized.

All this goes back to what I've said many times before: Some people (although subconsciously in most cases) do not really want to win.

To date, attempts by persons manifesting this kind of stubborn resistance; attempting to dine from a smorgasbord of mainstream handicapping with the Methodology and also get OVERLAYS has proved futile. I have a lot of letters telling me this. But they come from a minority. The majority come from winners who follow directions and tell of their success in Vox Populi, which is why that section of the Follow Up is there. To inspire others.

These writers, telling of their success, have accepted the new reality and have followed Tom Ainslie's example of letting the program do the "Handicapping" for them. Sadly, a few others are still looking for way to recapture the past: The good old days before the advent of downloading and multiple-track wagering. Before stewards at major tracks carded races in which winners are often so obvious that they pay very little. This selective carding is now attracting wagers from persons throughout the U.S. and Canada who don't give a hoot about profit. Apparently they only want to be able to brag that they were able to follow public trends and pick some winners.

If you find yourself confused when trying to thoroughly analyze corollaries and graphs, keep in mind that to win consistently all the Wagercapper needs in order to avoid any confusion, is the Rankings from the Primary Line Scores to eliminate non-contenders and the VALIDATORS. BL/BL is a big help. So is the rest of the SUPERSCREEN *if it doesn't confuse you*. If you're never confused and are consistently winning races and money to your complete satisfaction, keep

doing what you're doing. I'm not pushing sale of the VALIDATOR just because it's there and its users, including myself, say its the best thing we've ever done. Rather than make sales I'd rather remain honest. You are the best judge of your performance and R.O.I. with your current program. Only you know if your rewards are now optimal.

Many clients still like to Model by the old concept because, like Mt. Everest, it's there and was a part of earlier Methodology teachings. Instead of drowning your mental ship of state MODELING an ocean full of factors that constantly change and that so many find confusing, MODEL YOURSELF and MODEL WIN MUTUELS by the Line Scores that produce Final Rankings.

Are you following these directions? If so, that's the only model you really need, plus a rational appraisal of the Early-Late Graph. Let it tell you where the overlays are coming from by distance and surface. As I told a client yesterday on the phone, pencil in the WIN mutuel next to the Early or Late arrow on this graph. Over time it will tell you a LOT.

The cure for Losing is Winning. So, the cure for confusion is to merely avoid putting yourself in a position to BE confused. That is the reason I created the VALIDATOR.

In case you're one of those who just skims through the Follow Up, I'll repeat succinctly a few major points:

The Incremental Match-Up graph is one of the most useful in our tool chest. It shows MOVES against the pace, an important aspect for determining prospective winners. This is why I included IT as a secondary VALIDATOR in the Sartin: 2001 VALIDATOR program. Showing a contender's position by Fractions, 1-2 and 3, with a slight weighting of Total Pace at the end is so that you won't confuse Final Fraction position with Finish as so many did with Thoromation.

Look at GILLY'S BIG move compared to SMART with whom it was tied. SMART lost ground, from 1 to 3 in the first two fractions. GILLY had the BIGGEST gain of all. From 4-4 to 2, BEST move in the race. This is another way to break TIES.

INCREMENTAL MATCH-UP GRAPH

#	PNCNAME L	1F	2F	3F+TOTAL PACE
1	2 BORN 2	5->	1->	3->
2	3 EMERA1	2->	3->	4->
3	5 BREAK1	3->	2->	1->
4	6 GILLY1	4->	4->	2->
5	9 SMART1	1->	3->	2->

This graph matches the rankings in V/DC which is why it's called the secondary VALIDATOR.

It is imperative that you realize and accept the fact that the THIRD TIERED BL/BL, or 3rd ranked on VALIDATOR most often has as much chance winning the race AT A PRICE, as a horse Tiered or ranked #1 or #2. Let the ODDS, the payoff be your MODEL now. When a horse is BL/BL Tiered #1 or #2 and it meets your personal minimum win mutuel requirement, bet it. But reserve your SECOND win bet for the most likely OVERLAY in Tiers 3 or even 4. Bear in mind a

lot of overlays appear in Tiers 1 and 2 and are Ranked thusly on the VALIDATOR (see Follow Up 77).

While betting TWO horses goes against generations of handicapping literature calling for only ONE-horse-to-win wagering, it is proven fact that TWO HORSE wagering has been responsible for more consistent winners of money in the last twenty years than any other wagering plan or system. Those accepting it are consistent winners of money and races because it affords you the opportunity to win when a lower priced contender crosses the finish line first and when an overlay wins. It also provides a positive psychological boost. You're allowed to make a mistake and still win. The one-horse bettor has **no room for error**, only occasional bragging rights when the one horse does win and he/she can loudly proclaim, "I had that horse."

We still have a few stubborn one-horse bettors in our group. But I can state positively that we have never had a winning 20 race cycle report from even one of them. As an aside, we've also never had positive 20 race cycle report from anyone downloading from BRIS. We've had several hundred from those using the Synthesis TrackMaster Download. I'm not knocking BRIS; just reporting the facts. A clue to this fact is that Jim "The Hat" scratched BRIS and went with TrackMaster.

With the new VALIDATOR, anyone who enters reasonably predictive pace lines, in accordance with directions, has no excuse for not winning. With the SARTIN: 2001 VALIDATOR program, even our winning clients are reporting from two to THREE MORE winners per 20 race cycle.

Doc,

This is the second week of use – it continues to get more winners!! Looks like I get 2 to 3 more winners in a 20 race cycle than I have been with SYNT.

Great improvement!!

D.F. Washington (beta tester The Validator)

I would be less than honest if I did not tell you that a few of our consistent winners feel the VALIDATOR takes a lot of the fun from their handicapping because it simplifies the selection process to a point where skill becomes secondary. I can understand their resenting such a program. They spent many hundreds of hours trying to learn how to analyze races. To have a computer program that does it for them seems too Orwellian for their egos to accept. This is especially true of clients in professions that are making them relatively wealthy. They handicap for the satisfaction derived from correct analysis rather than for profit.

I envy their position. Making handicapping a mere game or hobby and being able to wager on the races with no concern for profit and savoring only the occasional big win, must be lots of fun but it is something most of us cannot afford.

My hat is off to these Jay Gatsby's of our world. They have confirmed Scott Fitzgerald's line that the rich are different from the rest of us: "They have more money."

Because I've been Wagercapping for so long, my ego and intellect need no further massaging, at least in the area "analyzing" horse races. I once loved analyzing races (NOT racing) and making correct wagering decisions, win, place and show. I relished the praise given me for being correct so often. Now analysis tires me to the point of ennui. I just want to look at BL/BL

and the VALIDATOR and walk up to the window to collect my profit. This attitude is probably less noble than engaging in the longer, more tedious process. I leave that for those who are younger and relish the ego satisfaction that comes from occasionally winning through ponderous analysis.

If they win often enough, that is.

Something that requires constant repetition is the fact that winners using TODAY'S Methodology PROFILE or, if you prefer, MODEL only profitable wagering opportunities, not individual corollaries. Keep a PROFIT MODEL derived from your records. This is why we created the computerized Wagering Decision Form to **teach** you how to do this.

A Corollary "Model" is of some benefit in Turf races. If, for instance you find, as so many have, that Turf horses high ranked in CPR, Hidden Energy and/or Late win more often and pay higher mutuels than Early runners, pay heed. But keep records because, depending on the track(s) at which you wager, the reverse might be true.

Only your records can confirm either outcome. You have weapons not available to the racing public. Just be sure that your own records are used when you try to analyze corollaries by distance and surface.

Personally, I only analyze corollaries in Turf races. For all others I depend on V/DC and the Incremental Pace Graph plus a nod toward BL/BL.

In the VALIDATOR program we use Text Graphs - as in the E-L Diff graph shown in this article. Now, no one will have trouble printing them out. There is such a plethora of printers on the market all using different driver characteristics, that text graphs were the only way to go.

Note also that I've inserted a new feature that will show the degree of: Early, Late, < >: Virtually Even. M(edium) Early or Late, V(ery) Early or Late, and EX(tremely) Early or Late.

One client carried on a running argument that I should have used the word SUSTAINED instead of Late. It matters not one iota to me what word you use. Just use the GRAPH as directed.

If I seem quarrelsome, feisty or parental and blaming, it's because of the joy I get from receiving reports from clients making huge profits. And then having to read the occasional e-mail or letter where the client doesn't seem to have a clue about how to win. These kinds of communications, though increasingly few, come from clients who keep looking at the trees instead of the forest.

They ask about minute little things that I thought were explained in Synthesis and six times a year in the Follow Up. I counter by assuring you they are completely taken care of by no more than TWO screens in the new VALIDATOR program.

Well, I've lectured enough. I just hope clients, especially the newer ones, will understand and accept what I've been attempting to impart.

**NOW, some NEW examples from the
VALIDATOR!**

More Test Races ~

VALIDATOR

AND ALSO APPLICABLE TO SYNTHESIS

Here we go, East, South, Midwest, and Far West, with a few races from the new Validator program. It offers the best of SYNTHESIS, Bottom Line/Betting Line, the Engen and the VALIDATOR, the E-L graph, the Incremental Stop Action Pace Graph and the ENGEN. In these races I've omitted the printout for the Pace Graph, since it Validates the Validator. In the interest of space I've printed only the nuts and bolts of the program's readouts with special emphasis on the new exciting feature that allows you to make comments after entering a star * or a question mark ? by a horse's name.

This feature tends to break ties, eliminate questionable horse and pay special attention to starred contenders.

I have received over 100 double-digit races from around the country, enough to fill at least two Follow Up editions. I chose AQU since a few clients complained of a dearth of longshots there. CALDER was very good to us for several weeks running. I stopped off at LAUREL for a \$46.40 winner. We went to TURFWAY PARK to demonstrate the this oft maligned track can be a profit gold mine. Climaxing our tour we went for TWO days to Hollywood Park where most of the winners were Overlays. We did this for the benefit of those complaining that Southern California tracks produced nothing but Favorites.

Please pay special attention to the black arrows I've placed pointing to the **L** (line used) and to the **COMMENTS** feature. You'll notice that The Best of LAST 3 was used in all but two instances. One winner and One Place Horse were taken from line four because of intervening races on different surfaces and distinctly different distances.

If the arrows above the **L**(line) selection don't convince everyone to follow directions regarding Paceline selection, I don't know what more I can possibly do to convince you.

I notice, as I'm sure you will, that, Aline Best, the tester who did the Turfway Park and Nov. 27th at Hollywood, has done some homework on **including** the Place horse in her computer entries. The other testers, doing East, South, Midwest, seemed to focus more on WIN horses only. The final races, from Hollywood Nov. 28, showed some skill at finding the Place horse.

It is a matter of style. If the mind is thinking WIN ONLY we're more apt to see in-the-money finishers left out. Aline thinks in terms of all potential wagers: Exacta, Trifecta, Pick Three, Daily Doubles. You will note how many of these Exotics she scored in her test races. However, as much as I'd like to brag on her, she bets very few Exotics and Pick Three's. Her reasoning: WAIT until a BIG BANK is built up before she starts investing in Exotics. I've mentioned that in the Follow Up a number of times. Yet many clients rush to "play" Exotics before establishing a history of their ability in winning them. I still hear too often about clients who make good profits on WIN bets who blow it all back LOSING exotics.

SYNTHESIS POWER RANKINGS AND FRACTALS

SCBL Calculated by Program to Conform to Today's Pace
FRACTALS WEIGHTED: E=Early L=Late N=Normal

THE VALIDATOR


93.50
41.40
101.00

AQU1110-7 8.0T \$48,000
BOTTOM LINE -- BETTING LINE

PNCNAME	LdNT	SR	PR	BAL	LS	TIE	ODDS	TRKDISTS	M/L	DAYS	AGE
8*EXTRA2		93	87	3	22.3		EVEN	SAR 8.0c	8/1	31	3
5*CHASI2	1	88	91	6	20.8	*	9-5	BEL 8.0T	3/1	18	4
2?TENBY2		84	89	5	20.8	*	9-5	CD 8.5T	4/1	514	4
7*SAID 2		86	90	6	18.3		5-2	BEL 8.0T	12/1	20	4
10?PEBO'3	1	85	91	8	12.5		9-2	BEL 8.0T	6/1	12	5

SYNTHESIS POWER RANKINGS AND FRACTALS

SYNTHESIS POWER RANKINGS AND FRACIALS



#	PNCNAME	LDNT	SR	BASO		PRIM		SUPP		FRACT			ESP	SCBL	PRIM												SUPP																																																																																																																																																																																																																																																																																																																																																																																																																																																																																																																																																																																																																																																																																																																																																																																																																																																																																																																																																																																																																																																																																																																																																																																																																																																																												
				L	P	T	LS	R	LS	R	E	L			N	P	P	P	T	H	F	F	S	F	E	T	T	P	P	P	P	P	P	P	P	P	P	P	P	P	P	P	P	P	P	P	P	P	P	P	P	P	P	P	P	P	P	P	P	P	P	P	P	P	P	P	P	P	P	P	P	P	P	P	P	P	P	P	P	P	P	P	P	P	P	P	P	P	P	P	P	P	P	P	P	P	P	P	P	P	P	P	P	P	P	P	P	P	P	P	P	P	P	P	P	P	P	P	P	P	P	P	P	P	P	P	P	P	P	P	P	P	P	P	P	P	P	P	P	P	P	P	P	P	P	P	P	P	P	P	P	P	P	P	P	P	P	P	P	P	P	P	P	P	P	P	P	P	P	P	P	P	P	P	P	P	P	P	P	P	P	P	P	P	P	P	P	P	P	P	P	P	P	P	P	P	P	P	P	P	P	P	P	P	P	P	P	P	P	P	P	P	P	P	P	P	P	P	P	P	P	P	P	P	P	P	P	P	P	P	P	P	P	P	P	P	P	P	P	P	P	P	P	P	P	P	P	P	P	P	P	P	P	P	P	P	P	P	P	P	P	P	P	P	P	P	P	P	P	P	P	P	P	P	P	P	P	P	P	P	P	P	P	P	P	P	P	P	P	P	P	P	P	P	P	P	P	P	P	P	P	P	P	P	P	P	P	P	P	P	P	P	P	P	P	P	P	P	P	P	P	P	P	P	P	P	P	P	P	P	P	P	P	P	P	P	P	P	P	P	P	P	P	P	P	P	P	P	P	P	P	P	P	P	P	P	P	P	P	P	P	P	P	P	P	P	P	P	P	P	P	P	P	P	P	P	P	P	P	P	P	P	P	P	P	P	P	P	P	P	P	P	P	P	P	P	P	P	P	P	P	P	P	P	P	P	P	P	P	P	P	P	P	P	P	P	P	P	P	P	P	P	P	P	P	P	P	P	P	P	P	P	P	P	P	P	P	P	P	P	P	P	P	P	P	P	P	P	P	P	P	P	P	P	P	P	P	P	P	P	P	P	P	P	P	P	P	P	P	P	P	P	P	P	P	P	P	P	P	P	P	P	P	P	P	P	P	P	P	P	P	P	P	P	P	P	P	P	P	P	P	P	P	P	P	P	P	P	P	P	P	P	P	P	P	P	P	P	P	P	P	P	P	P	P	P	P	P	P	P	P	P	P	P	P	P	P	P	P	P	P	P	P	P	P	P	P	P	P	P	P	P	P	P	P	P	P	P	P	P	P	P	P	P	P	P	P	P	P	P	P	P	P	P	P	P	P	P	P	P	P	P	P	P	P	P	P	P	P	P	P	P	P	P	P	P	P	P	P	P	P	P	P	P	P	P	P	P	P	P	P	P	P	P	P	P	P	P	P	P	P	P	P	P	P	P	P	P	P	P	P	P	P	P	P	P	P	P	P	P	P	P	P	P	P	P	P	P	P	P	P	P	P	P	P	P	P	P	P	P	P	P	P	P	P	P	P	P	P	P	P	P	P	P	P	P	P	P	P	P	P	P	P	P	P	P	P	P	P	P	P	P	P	P	P	P	P	P	P	P	P	P	P	P	P	P	P	P	P	P	P	P	P	P	P	P	P	P	P	P	P	P	P	P	P	P	P	P	P	P	P	P	P	P	P	P	P	P	P	P	P	P	P	P	P	P	P	P	P	P	P	P	P	P	P	P	P	P	P	P	P	P	P	P	P	P	P	P	P	P	P	P	P	P	P	P	P	P	P	P	P	P	P	P	P	P	P	P	P	P	P	P	P	P	P	P	P	P	P	P	P	P	P	P	P	P	P	P	P	P	P	P	P	P	P	P	P	P	P	P	P	P	P	P	P	P	P	P	P	P	P	P	P	P	P	P	P	P	P	P	P	P	P	P	P	P	P	P	P	P	P	P	P	P	P	P	P	P	P	P	P	P	P	P	P	P	P	P	P	P	P	P	P	P	P	P	P	P	P	P	P	P	P	P	P	P	P	P	P	P	P	P	P	P	P	P	P	P	P	P	P	P	P	P	P	P	P	P	P	P	P	P	P	P	P	P	P	P	P	P	P	P	P	P	P	P	P	P	P	P	P	P	P	P	P	P	P	P	P	P	P	P	P	P	P	P	P	P	P	P	P	P	P	P	P	P	P	P	P	P	P	P	P	P	P	P	P	P	P	P	P	P	P	P	P	P	P	P	P	P	P	P	P	P	P	P	P	P	P	P	P	P	P	P	P	P	P	P	P	P	P	P	P	P	P	P	P	P	P	P	P	P	P	P	P	P	P	P	P	P	P	P	P	P	P	P	P	P	P	P	P	P	P	P	P	P	P	P	P	P	P	P	P	P	P	P	P	P	P	P	P	P	P	P	P	P	P	P	P	P	P	P	P	P	P	P	P	P	P	P	P	P	P	P	P	P	P	P	P	P	P	P	P	P	P	P	P	P	P	P	P	P	P	P	P	P	P	P	P	P	P	P	P	P	P	P	P	P	P	P	P	P	P	P	P	P	P	P	P	P	P	P	P	P	P	P	P	P	P	P	P	P	P	P	P	P	P	P	P	P	P	P	P	P	P	P	P	P	P	P	P	P	P	P	P	P	P	P	P	P	P	P	P	P	P	P	P	P	P	P	P	P	P	P	P	P	P	P	P	P	P	P	P	P	P	P	P	P	P	P	P	P	P	P	P	P	P	P	P	P	P	P	P	P	P	P	P	P	P	P	P	P	P	P	P	P	P	P	P	P	P	P	P	P	P	P	P	P	P	P	P	P	P	P	P	P	P	P	P	P	P	P	P	P	P	P	P	P	P	P	P	P	P	P	P

SCBL Calculated by Program to Conform to Today's Pace
FRACTALS WEIGHTED: E=Early L=Late N=Normal

PN CNAME COMMENT
2 ?TENBY OFF 514 DAYS
5 *CHASI WON 5/10
7 *SAID LIKES TURF
8 *EXTRA WON LAST 2 (ONE ON TURF)
10 ?PEBO' LAST 2 POOR

THE VALIDATOR

PNCNAME	LdNT	TOT-R	TPV-R	TDC-R	V/DC-R
2?TENBY2		2	2	2	2
5*CHASI2	1	4	2	3	2
7*SAID 2		3	3	4	3
8*EXTRA2		1	1	1	1
10?PEBO'3	1	5	4	5	4

SCRATCHED Visit the Circle, Dots Pleasure, Senor Chop Chop.
Red Wraith, Fourth and Six, Not So Fast
7-SAID ENOUGH 21.60 9.40 6.50
11-CURRENCY ARBITRAGE 7.30 5.50
10-PEBO'S GUY 5.40

AQU1110-(8) 9.0D \$48,000
BOTTOM LINE -- BETTING LINE

PNCNAME	LdNT	SR	PR	BAL	LS	TIE	ODDS	TRKDISTS	M/L	DAYS	AGE
3*ROARI3		84	89	6	22.8		EVEN	WO 9.0D	6/5	35	3
5?BACK 3		84	85	5	22.3		EVEN	BEL 8.5D	4/1	56	3
1?THERE1		78	78	6	16.8		3-1	FL 8.5D	6/1	65	4
6?POWER3		80	88	5	16.3		3-1	SAR 9.0D	9/2	54	5
4?MAIDE3		76	85	8	10.0		5-1	BEL 9.0D	8/1	21	5

SYNTHESIS POWER RANKINGS AND FRACTALS

SYNOPSIS FOR											PRIM SUPP																
#	PNCNAME	LdNT	SR	B	L	T	PRIM		SUPP		FRACT			ESP	SCBL	B	L	C	T	H	F	F	S	F	E	T	T
				A	S	O	LS	R	LS	R	E	L	N			P	P	R	P	P	R	W	X	P	N	X	S
1	1?THERE1	78	6	2	4	23	3	17	4	4	4	4	4	4	4	5	2	4	4	1	3	4	3	4	3	4	3
2	3*ROARI3	84	6	4	1	13	1	8	2	2	2	2	2	2	2	1	3	2	1	2	2	2	2	2	2	1	1
3	4?MAIDE3	76	8	1	5	29	5	24	5	5	5	5	5	5	5	4	4	5	2	4	5	5	5	5	5	5	4
4	5?BACK 3	84	5	3	3	15	2	6	1	1	1	1	1	1	1	3	1	1	5	3	1	1	1	1	1	2	1
5	6?POWER3	80	5	5	2	25	4	16	3	3	3	3	3	3	3	2	5	3	3	5	4	3	4	3	4	3	2

SCBL Calculated by Program to Conform to Today's Pace
FRACTALS WEIGHTED: E=Early L=Late N=Normal

PN CNAME COMMENT

1 ?THERE LOW CLASS

3 *ROARI IN MONEY 5/6 ✓

4 ?MAIDE IN AND OUT WON 2/10

5 ?BACK LAST 2 POOR

6 ?POWER WON 1/10 LAST 2 POOR

4-MAIDEN FAIR	7	7.60	7	4.20	3	0.60	1	0.00	85	9.80
3-ROARING TWENTIE	4	1.10	4	2.10	2	0.50	2	1.00	84	0.70
1-THERESA THE TEA	2	0.50	1	0.00	1	0.00	3	2.80	83	14.40
1a-TALINUM DRIVE	5	4.60	2	0.50	4	1.10	4	6.30	80	14.40
6-POWERFUL NATION	6	5.10	6	3.70	5	1.20	5	6.40	80	8.10
5-BACK IN SHAPE	3	1.00	5	2.20	6	2.70	6	6.60	80	6.40
2-MARAGOLD PRINCE	1	0.00	3	0.60	7	7.70	7	16.10	73	4.20

TIMES: 48.2 112.7 151.7

THE VALIDATOR

PNCNAME	LdNT	TOT-R	TPV-R	TDC-R	V/DC-R
1?THERE1		4	3	3	2
3*ROARI3		1	1	.2	1
4?MAIDE3		5	5	5	3
5?BACK 3		3	1	1	1
6?POWER3		2	3	4	3

HIDE
FOR
WIN
ONLY

HIDE
ODDS
NOW
WIN*

SCRATCHED (NONE)

4-MAIDEN FAIR	21.60	4.70	4.80
3-ROARING TWENTIES		2.60	2.40
1-THERESA THE TEACHA			3.50


* HIDING ROARI moves MAIDE to 3

CRC1110- 4 6.0D \$8,000
BOTTOM LINE -- BETTING LINE

PNCNAME	LdNT	SR	80 PR BAL	LS TIE	ODDS	TRKDISTS	M/L	DAYS	AGE
2*CAMIN1	1	90	77 6	19.8	2-1	CRC 6.0D	3/1	21	4
3*SHEDR3		87	85 9	16.8	3-1	CRC 6.5D	8/1	27	6
17TEPEY3		87	84 9	15.0	7-2	CRC 6.0D	12/1	10	4
7*OIL C4		86	80 5	14.5	7-2	CRC 7.0D	5/2	14	4
4*MY SU1	1	87	77 7	13.8	4-1	CRC 6.0D	6/1	21	4
87TRIAL1		85	77 11	10.3	5-1	CRC 6.0D	4/1	11	5
67ZIPPE2		83	77 9	3.0	20-1	CRC 6.0D	6/1	14	4

SYNTHESIS POWER RANKINGS AND FRACTALS

SYNTHESIS POWER RANKINGS AND FRACTALS



#	PNCNAME	LDNT	SR	B L A S T	L P T	PRIM		SUPP		FRACT			ESP	SCBL	PRIM								SUPP							
						LS	R	LS	R	E	L	N			P	P	C	T	H	E	F	F	S	P	X	F	E	T	S	T
1	17TEPEY3		87	9	2	5	25	3	16	2	2	4	3	E/P	4.0	4	2	2	7	4	5	1	4	1	3	4	4			
2	2*CAMIN1	1	90	6	1	1	17	1	9	1	3	2	2	PRE	3.0	6	1	1	2	1	3	3	1	3	1	2	2			
3	3*SHEDR3		87	9	4	4	21	2	23	4	4	5	7	EAR		1	6	3	1	2	1	7	2	7	4	5	5			
4	4*MY SU1	1	87	7	1	3	28	5	20	3	1	3	4	EAR		1	7	4	3	7	2	4	5	4	5	3	3			
5	67ZIPPE2		83	9	3	7	40	7	34	6	6	7	6	E/P	6.0	5	4	6	6	6	7	6	7	6	7	7	7			
6	7*OIL C4		86	5	6	2	26	4	9	1	3	1	1	PRE	4.0	3	3	5	4	3	6	2	3	2	2	1	1			
7	87TRIAL1		85	11	5	6	31	6	29	5	5	6	5	E/P	4.0	2	5	5	5	5	4	5	6	5	6	6	6			

SCBL Calculated by Program to Conform to Today's Pace
FRACTALS WEIGHTED: E-Early L-Late N=Normal

PN CNAME COMMENT

- 1 7TEPEY LAST 2 TERRIBLE
- 2 *CAMIN TOUGH -- WON LAST 3 (AT LOWER CLASS)
- 3 *SHEDR HAS BEEN RACING WELL AT HIGHER LEVEL
- 4 *MY SU IN MONEY 2/4 (LOWER LEVEL)
- 6 7ZIPPE IN MONEY 5/5 GOING UP IN CLASS
- 7 *OIL C IN MONEY 7/10 (NO WINS IN LAST 10)
- 8 7TRIAL WON LAST 2 (LOWER LEVEL)

THE VALIDATOR

PNCNAME	LdNT	TOT-R	TPV-R	TDC-R	V/DC-R
17TEPEY3		5	3	4	3
2*CAMIN1	1	1	1	1	1
3*SHEDR3		4	2	3	2
4*MY SU1	1	3	4	5	4
7*OIL C4		2	2	2	2

SCRATCHED (NONE)

3-SHEDROW JACK

7-OIL CITY

8-TRIAL DATE

17.40

6.20

5.00

5.40

3.80

4.40

Exacta

3-7

78.60

LRL1110- 3 6.0D \$9,000
BOTTOM LINE -- BETTING LINE

PNCNAME	LdNT	SR	PR	BAL	LS	TIE	ODDS	TRKDISTS	M/L	DAYS	AGE
8?WARM 1		76	74	3	23.8		EVEN	DEL 6.0D	6/1	15	3
3?JIGGY3		75	73	5	20.5		9-5	TIM 6.5D	4/1	13	4
7*MERRY4		72	70	5	20.0		9-5	CNL 6.0D	8/1	13	3
1?YOUR 1x		69	77	5	16.8		3-1	DEL 8.0D	9/2	17	3

SYNTHESIS POWER RANKINGS AND FRACTALS

SYNTHESIS POWER RANKINGS AND FIGURES																PRIM					SUPP							
#	PNCNAME	LDNT	SR	B	L	T	PRIM		SUPP		FRACT			ESP	SCBL	E	L	C	T	H	F	F	S	F	E	T	T	
							LS	R	LS	R	E	L	N															P
1	1?YOUR 1x		69	5	4	4	23	4	20	4	4	4	4	EAR	3.0	1	4	4	2	4	4	4	4	4	4	4	4	4
2	3?JIGGY3		75	5	3	2	17	2	9	2	2	1	1	SUS	8.0	4	1	2	4	2	3	1	3	1	1	2	2	
3	7*MERRY4		72	5	2	3	20	3	14	3	3	3	3	EAR	1.0	3	3	3	3	3	2	3	2	3	3	3	3	
4	8?WARM 1		76	3	1	1	10	1	7	1	1	2	2	E/P		2	2	1	1	1	1	2	1	2	2	1	1	

SCBL Calculated by Program to Conform to Today's Pace
FRACTALS WEIGHTED: E=Early L=Late N=Normal

PN CNAME COMMENT
1 ?YOUR NO GOOD RUNS AT DISTANCE
3 ?JIGGY IN MONEY 4/5 (WON 1/22 LIFETIME)
7 *MERRY IN MONEY 4/10
8 ?WARM LAST 3 POOR

3 CL 3+P NW2L \$9,000 6.0D FT

7-MERRY PEBBLES	3	2.50	2	1.50	2	0.50	1	0.00	71	22.20
2-ONE SONG	1	0.00	1	0.00	1	0.00	2	0.30	71	3.50
9-JUST SILENCE	8	6.60	8	5.20	5	4.60	3	2.30	69	12.70
8-WARM HANDS	9	8.60	7	4.70	3	3.50	4	2.40	69	12.20
1-JIGGY'S LIGHTNI	2	2.00	4	2.60	4	4.50	5	2.90	68	3.20
6-TRICIA'S BANNER	7	4.10	6	4.60	8	7.70	6	4.40	66	36.60
5-ROUGHED FEATHER	10	13.60	9	10.20	9	10.70	7	5.90	65	45.70
1-YOUR GHOST	5	3.10	5	3.10	6	6.10	8	7.90	63	3.70
11-BRASS ATTACK	4	2.60	3	1.60	7	7.60	9	10.60	59	22.90
10-GOLD ROCK	6	3.60	10	10.30	10	15.70	10	13.40	56	36.50
TIMES:		23.0		47.0				113.6		

HIDE
FOR WIN
ODDS

THE VALIDATOR

PNCNAME	LdNT	TOT-R	TPV-R	TDC-R	V/DC-R
1?YOUR 1x		4	4	3	3
3?JIGGY3		2	2	1	1
7*MERRY4		3	3	4	2 W
8?WARM 1		1	1	2	1

SCRATCHED Princess Kathie, Jordan's Princess

7-MERRY PEBBLES 46.40 13.40 8.00
2-ONE SONG 5.60 5.00
9-JUST SILENCE 7.80

HIDING WARM leaves no doubt: It's MERRY & JIGGY

HOLLYWOOD PARK RACES- SATURDAY NOVEMBER 27, 1999

BET OFF-TRACK IN SAN BERNARDINO

NOW it's time to go to ALINE BEST'S BIG DAY at Hollywood Park.

Several things to note in these selections. (1) she won FIVE straight RACES, all but one of which paid double digit mutuels. (2) Had she chosen to bet them she would have also won Exactas. Trifecta and Pick Three's as noted. She bet only ONE Exacta and ONE Trifecta, No Pick Three's. She will at some future date, when she's confident enough to know she's ready.

Clients who do invest in Exotics have to initially ENTER more horses. WIN factors seldom apply to Place horses but often to Show horses. A lot of attention must be paid to the EPR - LPR readouts on SUPERSCREEN. Intense study and record keeping by distance and surface must be kept from the E-L (Early-Late) Difference Graph. In short use your tools to look as hard at the characteristics of Place (& Show) horses as you now do for winners. Always bear in mind that the horse SECOND most likely to WIN, only PLACES, 22% of the time.

This means looking at TWO wagering Decision concepts. The first, where you hide low odds or non-win contenders FOR WIN. Second, a record of what happens when you leave more horse IN to hit exotics. Soon you'll get a feeling for Place horses (you are probably already getting Show Horses) from just looking at their pacelines and will include them in your top 5 and ties. It's a matter of practice. Until that practice starts paying off on paper, AVOID BETTING EXOTICS!

Until you have a POSITIVE EXOTIC RECORD bet more to Win. Look at what Aline made just on her WIN bets in 5 Races. Betting \$20 per race, \$10 on TWO horses to win:

TOTAL BET \$120
WIN #1 - \$ 40.00
#2 - \$202.00
#3 - \$ 97.00
#4 - \$101.00
#5 \$79.50
#6 LOST \$20
GROSS - \$499.50
NET - \$379.50

This is for WIN only and does not count her Exacta and Trifecta on which she took a chance. If she's bet like some of our high rollers, she would have made thousands. However, by still remaining cautious she wins EVERY day. Betting Exotics and LOSING, can be a blow to the ego and the emotions, especially for those who bet exotics and eschew their winners. How many 1-3 exactas have you had?

After viewing Aline's sensational foray at Hollywood Park on Saturday, I had Shane download Sunday's Hollywood race to see if the track would yield two straight days of Overlays. He downloaded the day and we saw some good profit potential, so off we went to the off-site book in San Bernardino.

Hollywood Park Charts

Results of Saturday, Nov. 27, 1999, at Hollywood Park, Inglewood. Day 14 of a 31-day thoroughbred meeting.

2112 — FIRST RACE. 6 furlongs. Purses \$28,000, 3-year-olds. Claiming prices \$40,000-\$35,000.

Horse and Jockey	PP	%	1/4	1/2	3/4	Str.	Fin.	To\$1
Waki American, McCarron	5	2 1/4	2 1/4	1 1/4	1 1/4	1	1	3.00
Imaginary Line, Pincay	4	6	6	5 1/4	2 1/4	2	2	13.50
Flyaway Jack, Flores	3	3 1/4	4 1/4	4 1/4	3 1/4	3	3	4.20
Valley Don, Enriquez	6	4 1/4	3 1/4	3 1/4	4 1/4	4	4	2.00
He's A Stunner, P.Valenzuela	2	1 1/4	1 1/4	2 1/4	5 1/4	5	5	2.50
I'm on the way, Blanc	1	5 1/4	5 1/4	6	6	6	6	15.00

5—Waki American 8.00 5.00 2.80
4—Imaginary Line 2.60 3.60
3—Flyaway Jack 3.40

Time—21.97, 45.14, 58.89, 1:09.79. Cloudy and fast. Winner — b.c.3, Latin American-Mohyawi, Tr-Jenine Sahadi. Own-Barber, Miller, Todman et al.

✓ \$1 Exacta (5-4) Paid \$34.40
✓ \$1 Trifecta (5-4-3) Paid \$185.40
✓ \$2 Quinella (5-4) Paid \$41.20

2113 — SECOND RACE. 1 1/16 miles. Purses \$17,000, Fillies, 2-year-olds. Claiming prices \$32,000-\$28,000.

Horse and Jockey	PP	%	1/4	1/2	3/4	Str.	Fin.	To\$1
Qui's Fair Lady, Ramsammy	6	4 1/4	4 1/4	2 1/4	1 1/4	1	1	19.20
Let's Play Gin, P.Valenzuela	4	3 1/4	2 1/4	1 1/4	1 1/4	2	2	2.50
Save A Favor, Diaz	2	7 1/4	7 1/4	6 1/4	3 1/4	3	3	5.40
Wall Street Rally, Garcia	8	8	8	5 1/4	4 1/4	4	4	2.00
Stormin' Nana, Puglisi	5	2 1/4	3 1/4	3 1/4	5 1/4	5	5	5.70
High River, Enriquez	7	6 1/4	5 1/4	7 1/4	6 1/4	6	6	35.40
Bodas De Oro, Valdivia	1	1 1/4	1 1/4	4 1/4	7 1/4	7	7	19.70
Speak Compelling, Blanc	3	5 1/4	6 1/4	8	8	8	8	5.60

✓ 6—Qui's Fair Lady 40.40 14.40 8.20
✓ 4—Let's Play Gin 8.20 3.80
2—Save A Favor 5.00

Time—24.09, 48.52, 1:14.24, 1:41.38, 1:48.24. Cloudy and fast. Winner — dbb.1.2, Russian Courage-Who's A Lady, Tr-Mag Perez. Own-Milton S. Cohen.

✓ \$2 Double (5/6) Paid \$224.80
✓ \$1 Exacta (5-4) Paid \$100.20
✓ \$1 Trifecta (5-4-3) Paid \$818.10
✓ \$2 Quinella (4-6) Paid \$110.00

2114 — THIRD RACE. 6 furlongs. Purses \$11,000, 3-year-olds & up. Claiming prices \$10,000-\$8,000.

Horse and Jockey	PP	%	1/4	1/2	3/4	Str.	Fin.	To\$1
Kelly's Reward, Berio	5	1 1/4	1 1/4	1 1/4	1 1/4	1	1	8.70
Randi's Man, Ramsammy	1	2 1/4	2 1/4	2 1/4	2 1/4	2	2	3.20
Mont D'arnaud (Fr), Jaime	2	3 1/4	3 1/4	3 1/4	3 1/4	3	3	23.70
Innovative, Puglisi	6	4 1/4	4 1/4	4 1/4	4 1/4	4	4	2.80
Crystal Crickett (Fr), Pincay	8	8	8	8	8	5	5	1.60
Indomitable, P.Valenzuela	4	7 1/4	6 1/4	5 1/4	6 1/4	6	6	10.60
Tramp Harbor, Pedroza	7	6 1/4	7 1/4	7 1/4	7 1/4	7	7	11.70
Devil Dog Six, Linares	3	5 1/4	8	8	8	8	8	87.10

✓ 5—Kelly's Reward 18.40 8.40 7.00
✓ 1—Randi's Man 4.80 3.40
2—Mont D'arnaud 6.80

Time—22.28, 45.38, 57.87, 1:10.54. Cloudy and fast. Winner — dbb.g.4, Pirate's Bounty-Grandpa's Kelly, Tr-Wesley A. Ward. Own-James Derosa.

✓ \$2 Double (5/6) Paid \$812.40
✓ \$1 Exacta (5-1) Paid \$82.30
✓ \$1 Trifecta (5-1-2) Paid \$807.30
✓ \$1 Pick Three (5/6/5) Paid \$1,017.50
✓ \$2 Quinella (1-5) Paid \$41.00

2115 — FOURTH RACE. 6 furlongs. Purses \$28,000, 2-year-olds. Claiming prices \$40,000-\$35,000.

Horse and Jockey	PP	%	1/4	1/2	3/4	Str.	Fin.	To\$1
Incessantly Tough, Rummy	4	3 1/4	3 1/4	1 1/4	1 1/4	1	1	9.10
Duck Season, Pincay	3	2 1/4	2 1/4	2 1/4	2 1/4	2	2	8.60
Foot Em David, D'ssaye	1	4 1/4	4 1/4	4 1/4	4 1/4	3	3	3.30
North Northwest, Enriquez	5	5	5	5	5	4	4	5.30
Double Dollar Day, Gomez	2	1 1/4	1 1/4	3 1/4	5	5	5	0.60

Scratched — Induction Day, Justice Bold, Rapidilo.

6—Incessantly Tough 20.20 6.60 4.40
5—Duck Season 6.40 3.80
2—Foot Em David 3.80

Time—22.50, 46.44, 58.90, 1:11.86. Fast. Winner — b.c.2, In Excess-Favored One, Tr-Bob Baffert. Own-Mike Pegram.

\$2 Double (5/6) Paid \$232.00

✓ \$1 Exacta (5-5) Paid \$45.50
✓ \$1 Trifecta (5-5-2) Paid \$179.50
✓ \$1 Pick Three (5/5/5) Paid \$1,577.90
✓ \$2 Quinella (5-5) Paid \$36.60

2116 — FIFTH RACE. 1 mile on turf. Purses \$37,000, Allowance. Fillies and mares, 3-year-olds and up.

Horse and Jockey	PP	%	1/4	1/2	3/4	Str.	Fin.	To\$1
Nashoba (Ir), Delahoussaye	6	8 1/4	8 1/4	5 1/4	1 1/4	1	1	6.90
Palinisa (Fr), Espinoza	5	6 1/4	6 1/4	3 1/4	2 1/4	2	2	3.30
She's Grand, McCarron	3	3 1/4	3 1/4	1 1/4	3 1/4	3	3	2.00
La Vuella, Desormeaux	10	7 1/4	7 1/4	4 1/4	4 1/4	4	4	10.80
I B A Miracle, Solis	9	9 1/4	9 1/4	6 1/4	5 1/4	5	5	7.20
Gift Of Style, Nakatani	4	2 1/4	2 1/4	2 1/4	6 1/4	6	6	8.90
Matanah (GB), Valdivia	8	10 1/4	10 1/4	8 1/4	7 1/4	7	7	62.20
Begunling, Flores	2	5 1/4	5 1/4	7 1/4	8 1/4	8	8	6.20
Know That Song, Garcia	11	11	11	10 1/4	9 1/4	9	9	105.30
Stylish Talent, Puglisi	1	1 1/4	1 1/4	9 1/4	10 1/4	10	10	62.00
Greedy Gal, Ramsammy	7	4 1/4	4 1/4	11	11	11	11	48.70

Scratched — Ashcreek, BJ Ballet, Betrayer, Filmsy.

6—Nashoba 15.80 6.40 3.80
5—Palinisa 4.80 3.00
3—She's Grand 2.80

Time—23.41, 47.47, 1:11.39, 1:35.59. Cloudy and firm. Winner — gr.f.3, Caerleon-Grise Mine, Tr-Carla Gaines. Own-Warren B. Williamson.

✓ \$2 Double (5/6) Paid \$287.00
✓ \$1 Exacta (5-5) Paid \$34.80
✓ \$1 Trifecta (5-5-3) Paid \$100.80
✓ \$1 Pick Three (5/5/5) Paid \$875.50
✓ \$2 Quinella (5-5) Paid \$24.20

2117 — SIXTH RACE. 6 furlongs. Purses \$33,000, Maiden fillies, 3-year-olds.

Horse and Jockey	PP	%	1/4	1/2	3/4	Str.	Fin.	To\$1
A La Reine, Nakatani	8	2 1/4	2 1/4	1 1/4	1 1/4	1	1	1.20
Sherri Shine, Pincay	7	3 1/4	3 1/4	2 1/4	2 1/4	2	2	5.90
Lora And I, Solis	6	5 1/4	5 1/4	3 1/4	3 1/4	3	3	1.40
Templemartin, Gomez	5	6 1/4	6 1/4	4 1/4	4 1/4	4	4	61.80
Demidoff, Garcia	4	6 1/4	6 1/4	5 1/4	5 1/4	5	5	49.50
Onaccountofyou, Flores	2	1 1/4	1 1/4	4 1/4	6 1/4	6	6	12.40
Annie Banana, P.Valenzuela	3	7 1/4	7 1/4	7 1/4	7 1/4	7	7	21.60
Miss Valiant, Alvarado	8	5 1/4	5 1/4	8	8	8	8	32.30

Scratched — Boubouline.

6—A La Reine 4.40 2.80 2.10
7—Sherri Shine 4.40 2.40
5—Lora And I 2.20

Time—22.12, 45.41, 57.31, 1:10.22. Cloudy and fast. Winner — b.f.2, Alydred-Duchess Zee, Tr-Richard Mendella. Own-Mr. and Mrs. J.S. Moss.

✓ \$2 Double (5/6) Paid \$42.80
✓ \$1 Exacta (5-7) Paid \$10.50
✓ \$1 Trifecta (5-7-5) Paid \$20.30
✓ \$1 Pick Three (5/6/5) Paid \$240.40
✓ \$2 Quinella (5-7) Paid \$15.80
✓ \$1 Superfecta (5-7-5-1) Paid \$144.50

2118 — SEVENTH RACE. 1 1/16 miles on turf. \$800,000 Citation Handicap (Grade II). 3-and-older.

Horse and Jockey	PP	%	1/4	1/2	3/4	Str.	Fin.	To\$1
Brave Act (GB), Solis	6	11 1/4	11 1/4	10 1/4	1 1/4	1	1	6.40
Native Desert, Gomez	3	4 1/4	4 1/4	2 1/4	2 1/4	2	2	18.60
Bouccaneer (Fr), Espinoza	5	7 1/4	7 1/4	9 1/4	3 1/4	3	3	3.70
Hawksley Hill (Ir), Day	10	10 1/4	10 1/4	6 1/4	4 1/4	4	4	1.90
Lord Smith (GB), Pincay	8	9 1/4	9 1/4	7 1/4	5 1/4	5	5	27.30
Ladies Din, Desormeaux	9	9 1/4	9 1/4	6 1/4	5 1/4	6	6	4.40
Sharan (GB), Ramsammy	4	3 1/4	3 1/4	3 1/4	7 1/4	7	7	49.40
Dixie Dot Com, McCarron	11	5 1/4	4 1/4	4 1/4	8 1/4	8	8	8.80
Committize, Flores	8	8 1/4	8 1/4	11	9 1/4	9	9	52.80
Takavian (Ir), D'ssaye	2	2 1/4	2 1/4	8 1/4	10 1/4	10	10	48.60
Crystal Hearted (GB), Blanc	1	1 1/4	1 1/4	1 1/4	11	11	11	13.30

6—Brave Act 14.80 7.60 4.40
3—Native Desert 15.60 6.20
5—Bouccaneer 4.00

Time—23.34, 46.45, 1:09.54, 1:33.71, 1:39.69. Cloudy and firm. Winner — dbb.h.5, Persian Bold-Circus Act, Tr-Ronald McAnally. Own-Sidney H. Craig.

✓ \$2 Double (5/6) Paid \$28.60
✓ \$1 Exacta (5-3) Paid \$90.20
✓ \$1 Trifecta (5-3-5) Paid \$544.00
✓ \$1 Pick Three (5/6/5) Paid \$145.20
✓ \$2 Quinella (3-5) Paid \$135.40
✓ \$1 Superfecta (5-3-5-7) Paid \$1,551.90

2119 — EIGHTH RACE. 1 1/4 miles. Starter allowance. 3-year-olds.

Horse and Jockey	PP	%
Fairway Foe, Nakatani	1	3 1/4
Inwood, P.Valenzuela	2	4 1/4
Atwood, Pedroza	3	5 1/4
J.R. Holmes, Oak	4	6 1/4
Cannon, Berik	5	7 1/4
Askabout, Jaxxeg	6	8 1/4
Azagal, Garcia	7	9 1/4
Ruth's Protege, Pin	8	10 1/4

Scratched — O'St...

1—Fairway Foe
2—Inwood
3—Atwood
Time—24.95, 50.34, 1:15.31,
Cloudy and fast. Winner —
Vladimir Cerin.

2120 — NINTH RACE. 1 1/4 miles. Starter allowance. 3-year-olds.

Horse and Jockey	PP	%
Jokerman, Day	3	6 1/4
Purely Cozzens, Desormeaux	6	2
Kleofus, Solis	5	5
Long Term Investor, D'ssaye	2	1 1/4
Capote Sun, Nakatani	1	4 1/4
Reba's Gold, Pincay	4	3 1/4

3—Jokerman
6—Purely Cozzens
5—Kleofus
Time—23.78, 47.32, 1:10.72, 1:3
Winner — b.c.2, Septieme Clef-Falcon
Own-David and Jill Heerensperger.

✓ \$2 Double (1-3) Paid
✓ \$1 Exacta (3-6) Paid
✓ \$1 Trifecta (3-6-5) Paid
✓ \$1 Pick Three (5-1-3) Paid
✓ \$2 Quinella (3-6) Paid

2121 — TENTH RACE. 7 furlongs. Starter allowance. 3-year-olds.

Horse and Jockey	PP	%
Fade To Blue, Slew The Groom	1	1 1/4
R Aly, Delahoussaye	2	2 1/4
This Cats A Fly	3	3 1/4
The Plumber, Berik	4	4 1/4
Meghann's Lad, Pin	5	5 1/4
Tim Ian Aaron, Brown	6	6 1/4
BackintheFuture, Jauregui	7	7 1/4
A King Flying, Aguirre	8	8 1/4
White Cove, Linares	9	9 1/4

Scratched — Ashley's Prospect.

7—Fade To Blue
3—Slew The Groom
10—R Aly
Time—22.90, 46.49, 1:11.86, 1
Winner — ch.g.3, Prized-Green Aga
Lake Forest Stable, Push Push St

✓ \$2 Double (3/7) Paid
✓ \$1 Exacta (7-3) Paid
✓ \$1 Trifecta (7-3-10)
✓ \$1 Pick Three (1/3/7)
Pick Six Winning Number
Pick Six Pool \$804,899 plus
73 Tickets with 6 winners
1716 Tickets with 5 winners
\$1 Pick All Hoss 4,5/4,1
3,6/1,8/3,8/1
Pick All Pool 1
No Tickets with 10
28 Tickets with 8 winners
\$1 Superfecta (7-3-10-4)
\$2 Quinella (3-7) Paid
\$2 Double Consolation

On-Track attendance: 10,342. On-Track attendance: 14,008. Inta Out of State attendance: N/A. Out of State attendance: 24,350. TOTAL

Hollywood Park - November 27th, 1999

HOL1127- 1 (6.00 \$20,000
BOTTOM LINE -- BETTING LINE

▼

PNCNAME	LJNT	SR	PR	DAL	LS	TIE	ODDS	TRKDISTS	M/L	DAYS	AGE	
3 FLYAW2		87	88	4	20.0	*	9-5	DM	6.00	5/1	10	3
5 WAKI 2	1	86	86	5	20.0	*	9-5	SA	6.00	3/1	27	3
6 VALLE2		87	85	7	19.5		2-1	DMR	7.00	5/2	49	3
2 HE'S 1	1	82	86	7	15.5	*	7-2	SA	6.00	2/1	41	3
4 IMAG12	2	83	88	7	15.5	*	7-2	SA	6.00	6/1	31	3

SYNTHESIS POWER RANKINGS AND FRACTALS

SYNTHESIS POWER TERMINALS AND											PRIM												SUPP													
#	PNCNAME	LJNT	SR	D L T			PRIM			SUPP			FRACT			ESP	SCDL	R	P	L	C	T	H	P	W	X	S	P	N	S	P	X	E	T	S	P
				A	S	O	L	R	L	S	R	E	L	N																						
1	2 HE'S 1	1	82	6	5	5	25	3	19	4	2	5	5	EAR	1.0	2	5	5	3	5	3	2	3	2	5	5	4									
2	3 FLYAW2		87	4	2	1	16	1	9	1	5	1	1	PRE	4.0	4	1	1	1	1	4	4	2	4	1	1										
3	4 IMAG12	2	83	7	1	3	25	3	16	2	3	2	2	E/P	2.0	5	2	4	4	2	5	3	3	3	4	3	2									
4	5 WAKI 2	1	86	5	3	2	16	1	9	1	1	3	4	EAR		1	4	3	2	4	1	1	1	1	3	2	2									
5	6 VALLE2		87	7	4	4	19	2	16	3	4	4	3	E/P	3.0	3	3	2	1	3	2	5	2	5	2	4										

SCDL Calculated by Program to Conform to Today's Pace
FRACTALS WEIGHTED: E=Early L=Late N=Normal

THE VALIDATOR

PNCNAME	LJNT	TOT-R	TPV-R	TDC-R	V/DC-R
2 HE'S 1	1	6	3	5	3
3 FLYAW2		1	1	1	1
4 IMAG12	2	3	2	4	3
5 WAKI 2	1	2	1	3	1
6 VALLE2		4	2	2	2

S
P
W


HOL1127- 1 (6.00 \$20,000

#	PNCNAME	LJNT	LATE/EARLY	TOT R
1	2 HE'S 1	1	17.8	170.7 5
2	3 FLYAW2		8.8	171.9 1
3	4 IMAG12	2	2.8	170.9 3
4	5 WAKI 2	1	16.8	171.4 2
5	6 VALLE2		11.8	170.7 4

Form	Horse	Win	Place	Show
5	Waki American	8.00	5.00	2.80
4	Imaginary Line		9.60	3.60
3	Flyaway Jack			3.40
Wager Type Winning Numbers Payoff				
\$1 Exacta	5-4			34.40
\$2 Quinella	4-5			41.20
\$1 Trifecta	5-4-3			185.40

IN THIS 6 FUR. RACE, LOOK AT THE EPS &
EPS & LPS RANKINGS. THE WINNER IS #1 EARLY.
THE PLACE SHOW HORSE HAVE NO EARLY.

HOL1127- 2 (8.5D) \$17,000
 BOTTOM LINE -- BETTING LINE



PNCNAME	LdNT	SR	PR	BAL	LS	TIE	ODDS	TRKDIST	M/L	DAYS	AGE
8 WALL 2p		72	70	5	22.8		EVEN	SA 6.5D	5/2	16	2
5 STORM3p 2		68	71	7	22.0		3-2	SA 5.5D	6/1	29	2
6 QUI'S2p		66	70	4	19.5 *		2-1	SA 5.5D	20/1	15	2
4 LET'S2p 2		65	71	7	19.5 *		2-1	SA 5.5D	2/1	29	2
1 BODAS4p		65	69	7	10.0		5-1	DMR 5.5D	20/1	23	2

SYNTHESIS POWER RANKINGS AND FRACTALS

													PRIM												SUPP											
#	PNCNAME	LdNT	SR	B A L	L P T	T	PRIM				SUPP				FRACT				ESP	SCBL	E P R	L P R	C P T	T E	W F X	F S P N	F X	E	T	T P						
							LS	R	LS	R	E	L	N																							
1	1 BODAS4p	65	7	5	5	32	4	24	5	4	5	5	PRE	2.0	4	4	5	5	5	5	4	5	4	5	5	5	5	5								
2	4 LET'S2p 2	65	6	2	4	21	3	21	4	5	4	4	PRE	1.0	5	2	4	1	1	3	5	4	5	4	4	4	4									
3	5 STORM3p 2	68	6	1	3	17	2	13	3	3	3	3	PRE		2	2	2	3	3	2	3	2	3	2	3	3	3									
4	6 QUI'S2p	66	4	4	2	21	3	12	2	2	2	2	S/P	1.0	3	3	3	2	4	4	2	3	2	3	2	2	2									
5	8 WALL 2p	72	4	3	1	11	1	5	1	1	1	1	S/P		1	1	1	4	2	1	1	1	1	1	1	1	1									

SCBL Calculated by Program to Conform to Today's Pace
 FRACTALS WEIGHTED: E=Early L=Late N=Normal

PN cNAME COMMENT

2 ?SAVE only one line

3 ?SPEAK line 2 is not a great projection

THE VALIDATOR

PNCNAME	LdNT	TUT-R	TIV-R	TDC-R	V/DC-R
1 BODAS4p		5	4	5	4
4 LET'S2p 2		4	3	4	3 P
5 STORM3p 2		3	2	2	2
6 QUI'S2p		2	2	3	3 W
8 WALL 2p		1	1	1	1

HOL1127- 2 8.5D \$17,000

#	PNCNAME	LdNT	LATE/EARLY	TOT R
1	1 BODAS4p		-3.5	156.3 5
2	4 LET'S2p 2		-7.4	156.4 4
3	5 STORM3p 2		-3.9	157.0 3
4	6 QUI'S2p		-2.1	157.3 2
5	8 WALL 2p		-6.0	158.3 1

EX-L V-L H-L <E> H-E V-E EX-E

Pgm Horse Win Place Show
 6 Qui's Fair Lady 40.40 14.40 8.20

ALL CONTENDERS WERE SPRINTERS
 (p)ROJECTED INTO TODAY'S ROUTE DISTANCE

Pgm Horse Win Place Show
 6 Qui's Fair Lady 40.40 14.40 8.20

Pgm	Horse	Win	Place	Show
6	Qui's Fair Lady	40.40	14.40	8.20
4	Let's Play Gin		5.20	3.80
2	Save a Favor			5.00
Wager Type	Winning Numbers	Payoff		
\$2 Daily Double	5-6	224.80		
\$1 Exacta	6-4	100.20		
\$2 Quinella	4-6	110.00		
\$1 Trifecta	6-4-2	819.10		

Pgm	HorseName (Jockey)	Wgt	M/E	PP	SP	1/4	1/2	3/4	Str	Fin	Odds
6	Qui's Fair Lady (Ramsammy, E.)	118	BL b	6	2	4-2 1/2	4-4 1/2	3-Head	2-1/2	1-1	19.20
4	Let's Play Gin (Valenzuela, P.A.)	120	BL	4	7	3-2 1/2	2-1 1/2	2-1 1/2	1-1	2-1	2.50
2	Save a Favor (Diaz, V.M.)	113	BL b	2	8	7-1 1/2	7-4	6-1/2	6-2	3-Head	5.40
8	Wall Street Rally (Garcia, M.S.)	120	BL	8	4	8	8	8	5-Head	4-1/2	2.00
5	Stormin' Nana (Puglisi, I.)	118	BL b	5	1	2-1	3-1	4-4 1/2	3-2 1/2	5-4 1/2	5.70
7	High River (Enriquez, I.D.)	118	BL	7	3	6-1/2	5-1/2	5-Head	7-2 1/2	6-3	35.40
1	Bodas de Oro (Valdivia, Jr., J.)	118	BL b	1	5	1-1/2	1-1/2	1-Head	4-Head	7-2	19.70
3	Speak Compelling (Blanc, B.)	118	BL b	3	6	5-1 1/2	6-Head	7-1 1/2	8	8	5.60

Fractional Times: 24.09, 48.52, 1:14.24, 1:41.38, 1:48.24

PN	FTS	M/LN	NAME	JOCKEY	R	W	W%	TRAINER	R	W	W%
1		20/1	BODAS	VALDIVIAJR.	22	0	0	TINSLEYJR.	4	0	0
2		6/1	SAVE	DIAZ, VICTO	26	1	4	CURRIN, WIL	2	0	0
3		7/2	SPEAK	BLANC, BRIC	55	7	13	LUKAS, D	66	11	17
4		2/1	LET'S	VALENZUELA,	100	16	16	MOREYJR, WI	26	5	19
5		6/1	STORM	PUGLISI, IG	56	7	13	CHAPMAN, JA	11	3	27
6		20/1	QUI'S	RAMSAMMY, E	48	9	19	PEREZ, MAG	2	0	0
7		15/1	HIGH	ENRIQUEZ, I	69	9	13	HARRINGTON,	13	3	23
8		5/2	WALL	GARCIA, MAT	63	3	5	CERVANTES,	10	1	10

NOTE

Please note that only once did Aline go back 4 lines to find one comparable to today's race. Distance and Surface changes are the chief reason. Occasionally a horse will be entered way over its head at the wrong distance to prep it for an easier go in its next event at a customary distance, surface and competition level. That was the case in the 3rd race with KELLY'S REWARD.

In the 1st race, you'll note Aline's judicious use of the Early-Late graph. While the winner ran Very Early, the Place and Show horse ran barely early. This too is Counter Energy since the Place and Show horse were so close to Late. In the 5th race, all contenders ran Late. Typical of double digit winners, especially in Routes.

Note Aline's HIDE notations. In race 6 she even shows the Jockey/Trainer stats. A 19% Jockey and a 0 (zero) wins Trainer. She likes to how these stats when her horse wins with a double digit mutuel - it's especially pleasing to her when the Win mutuel pays \$40.40.

1101127- 3 6.00 \$11.000
BOTTOM LINE -- BETTING LINE

PNCNAME	LdNT	SR	PR	BAL	LS	TIE	ODDS	TRKDIST	M/L	DAYS	AGE
8 CRYST2	1	85	86	5	17.8		5-2	DMR 6.00	5/2	59	
1 RANDI1	2	84	80	9	17.3		5-2	SA 6.00	4/1	22	7
5 KELLY4	✓	84	79	7	15.8		7-2	DMR 6.00	6/1	68	4
4 INDOM3		84	81	7	15.3		7-2	SA 6.00	6/1	14	7
2 MONT 1	2	82	80	8	12.8		9-2	SA 6.00	8/1	22	5
6 INNOV4	✓	83	86	6	12.3		9-2	DMR 6.00	3/1	13	6

HIDE FOR WIN

SYNTHESIS POWER RANKINGS AND FRACTALS

SYNTHESIS POWER SAMPLING AND DATA															PRIM										SUPP									
#	PNCNAME	LdNT	SR	B	L	T	PRIM		SUPP		FRACT			ESP	SCBL	E	L	C	T	H	F	F	S	F	S	T	P							
							LS	R	LS	R	E	L	N															P	R	R	P	X	P	X
1	1	RANDI1	2	84	9	1	5	20	2	13	2	2	3	4	E/P	2.0	3	3	2	4	2	3	3	1	3	1	5	3						
2	2	MONT	1	2	82	8	2	6	27	5	20	5	6	4	3	PRE	4.0	6	2	4	5	3	6	1	5	1	4	6	4					
3	4	INDOM3		84	7	5	4	24	4	19	3	1	6	5		EAR	1.0	2	5	3	2	6	2	4	3	4	3	4	5					
4	5	KELLY4		84	7	4	3	21	3	23	4	5	5	6		EAR		1	6	2	1	4	1	6	3	6	5	3	6					
5	6	INNOV4	1	83	6	6	2	29	6	18	3	4	2	2		E/P	2.0	4	4	4	3	5	4	5	4	5	5	2	2					
6	8	CRYST2	1	85	5	3	1	19	1	8	1	3	1	1		PRE	3.0	5	1	1	4	1	5	2	2	2	2	1	1					

SCBL Calculated by Program to Conform to Today's Pace
FRACTALS WEIGHTED: E=Early L=Late N=Normal

THE VALIDATOR

PNCNAME	LdNT	TOT-R	TPV-R	TDC-R	V/DC-R
1 RANDI1	2	5	1	2	1
4 INDOM3		4	2	5	2
5 KELLY4		3	1	3	1
6 INNOV4	1	2	3	4	3
8 CRYST2	1	1	1	1	1


Pgm	HorseName (Jockey)	Wgt	M/E	PP	SP	1/4	1/2	Str	Fin	Odds
5	Kelly's Reward (Berrio, O.A.)	118	BL	5	1	1-1 1/2	1-1 1/2	1-2 1/2	1-1 1/2	8.70
1	Randi's Man (Ramsammy, E.)	118	BL bf	1	6	2-Head	2-1 1/2	2-2 1/2	2-4 1/2	3.20
2	Mont d'Arnaud (FR) (Jaime, R.)	111	BL b	2	8	3-Head	3-2	3-1/2	3-Neck	23.70
6	Innovative (Puglisi, I.)	118	BL	6	2	4-1	4-1 1/2	4-1 1/2	4-1	2.80
8	Crystal Crickett (FR) (Pincay, Jr)	118	BL b	8	5	8	5-1	6-3	5-Head	1.60
4	Indomable (Valenzuela, P.A.)	118	BL b	4	7	7-2	6-2 1/2	5-Head	6-3 1/2	10.60
7	Tramp Harbor (Pedroza, M.A.)	118	BL bf	7	3	6-1	7-1/2	7-5	7-11	11.70
3	Devil Dog Sixx (Linares, M.)	118	BL b	3	4	5-1/2	8	8	8	67.10

Fractional Times: 22.28, 45.38, 57.67, 1:10.54

Pgm	Horse	Win	Place	Show
5	Kelly's Reward	19.40	8.40	7.00
1	Randi's Man		4.60	3.40
2	Mont d'Arnaud (FR)			6.80

Wager Type	Winning Numbers	Payoff
\$1 Pick 3	5-6-5 (3 correct)	1,017.50
\$2 Daily Double	6-5	512.40
\$1 Exacta	5-1	52.30
\$2 Quinella	1-5	41.00

HOL1127- 4 6.0D \$28,000
BOTTOM LINE -- BETTING LINE



PNcNAME	LdNT	SR	79 PR BAL	LS	TIE	ODDS	TRKDISTS	M/L	DAYS	AGE
7 NORTH3	1	81	79	6	23.3	EVEN	SA 6.0D	5/1	15	2
2 FOOL 1		80	82	3	21.5	8-5	BM 6.0D	4/1	28	2
6 INEXC2	1	77	79	6	19.5	2-1	SA 6.0D	6/1	9	2
5 DUCK 1x		78	74	5	19.3	2-1	SA 8.5D	6/1	19	2

SYNTHESIS POWER RANKINGS AND FRACTALS

UNCLASSIFIED FORMERLY CONFIDENTIAL											PRIM										SUPP									
#	PNcNAME	LdNT	SR	B	L	T	PRIM		SUPP		FRACT			ESP	SCBL	E	L	C	T	H	F	F	S	F	Σ	T	T			
							LS	R	LS	R	E	L	N															P	P	P
1	2	FOOL	1	80	3	2	1	16	2	9	2	2	1	1	E/P		4	2	2	1	1	3	3	2	3	2	1	1		
2	5	DUCK	1x	78	5	3	4	22	4	19	4	4	3	3	PRE	6.0	3	3	3	2	3	4	4	4	4	3	4	4		
3	6	INEXC2	1	77	6	4	3	18	3	14	3	1	4	4	EAR		1	4	4	3	4	1	1	3	1	4	3	3		
4	7	NORTH3	1	81	6	1	2	12	1	8	1	3	2	2	EAR	2.0	2	1	1	2	2	2	2	1	2	1	2	2		

SCBL Calculated by Program to Conform to Today's Pace
FRACTALS WEIGHTED: E=Early L=Late N=Normal

PN cNAME COMMENT

3 ?DOUBL maiden line - 2 lines total - other was sr70 in 6.5T

THE VALIDATOR

PNcNAME	LdNT	TOT-R	TPV-R	TDC-R	V/DC-R
2 FOOL 1		1	2	1	1 S
5 DUCK 1x		4	4	2	3 P
6 INEXC2	1	3	3	4	2 W
7 NORTH3	1	2	1	3	1

Pgm	Horse	Win	Place	Show
6	Inexcessivelytough	20.20	6.60	4.40
5	Duck Season		6.40	3.80
2	Fool 'Em David			3.80

Wager Type	Winning Numbers	Payoff
\$1 Pick 3	6-5-6 (3 correct)	1,577.90
\$2 Daily Double	5-6	232.00
\$1 Exacta	6-5	45.50
\$2 Quinella	5-6	36.60
\$1 Trifecta	6-5-2	179.80

1101127- 5(8) OT \$37,000
BOTTOM LINE -- BETTING LINE

PNCNAME	LdNT	SR	PR	BAL	LS	TIE	ODDS	TRKDIST	M/L	DAYS	AGE
5 PALIN1	1	83	84	3	20.3		9-5	DMR 8.5T	5/2	93	3
9 I B A2	1	82	84	3	18.0		5-2	DMR 8.5T	8/1	35	5
10 LA VU2	2	84	85	8	17.0		5-2	SA 8.0T	12/1	30	3
6 NASHO1		84	81	7	16.5 *		3-1	SA 9.0T	4/1	49	3
8 MATAN2	2	83	85	9	16.5 *		3-1	SA 8.0T	20/1	19	3

SYNTHESIS POWER RANKINGS AND FRACTALS

											PRIM				SUPP															
#	PNCNAME	LDNT	SR	B	L	S	T	PRIM		SUPP		FRACT			ESP	SCBL	E	P	C	T	H	F	X	S	P	X	Z	T	S	P
								LS	R	LS	R	E	L	N																
1	5	PALIN1	1	83	3	4	1	15	1	8	1	2	1	1	LAT	6.0	5	1	4	2	1	1	1	1	1	1	1	4	1	
2	6	NASHO1		84	7	2	3	23	4	15	3	1	3	3	LAT	3.0	2	4	2	5	4	3	3	3	3	3	3	3		
3	8	MATAN2	2	83	9	1	5	23	4	18	5	5	4	4	LAT	1.0	4	2	3	4	3	2	5	3	5	4	2	4		
4	9	I B A2	1	82	3	5	2	21	2	13	2	4	2	2	LAT	6.0	3	3	5	1	2	5	2	2	2	2	5	2		
5	10	LA VU2	2	84	8	3	4	22	3	19	4	3	5	5	SUS		1	5	1	3	4	4	4	4	4	5	1	5		

SCBL Calculated by Program to Conform to Today's Pace
FRACTALS WEIGHTED: E=Early L=Late N=Normal

THE VALIDATOR

PNCNAME	LdNT	TOT-R	TPV-R	TDC-R	V/DC-R
5 PALIN1	1	1	1	4	1 P
6 NASHO1		3	3	1	1 W
8 MATAN2	2	5	4	2	2
9 I B A2	1	2	2	5	2
10 LA VU2	2	4	3	3	3

#	PNCNAME	LdNT	TOT R
1	5 PALIN1	1	-25.9
2	6 NASHO1		-14.4
3	8 MATAN2	2	-22.1
4	9 I B A2	1	-19.6
5	10 LA VU2	2	-11.9

Pgm	Horse	Win	Place	Show
6	Nashoba (IRE)	15.80	6.40	3.80
5	Palinisa (FR)		4.60	3.00
3	She's Grand			2.80

Wager Type	Winning Numbers	Payoff
\$1 Pick 3	5-6-6 (3 correct)	875.80
\$2 Daily Double	6-6	287.00
\$1 Exacta	6-5	34.60
\$2 Quinella	5-6	24.20

Pgm	HorseName (Jockey)	Wgt	M/E	PP	SP	1/4	1/2	Str	Fin	Odds
6	A La Reine (Nakatani, C.S.)	120	BL	6	2	2-1	1-1	1-4 1/2	1-9	1.20X
7	Sherri Shine (Pincay, Jr., L.A.)	120	BL	7	1	3-1	3-Head	2-Head	2-1/2	5.90
5	Lora and I (Solis, A.O.)	120	BL f	5	4	1-Head	2-1 1/2	3-2	3-5	1.40X
1	Templemartin (Gomez, G.K.)	120	B f	1	8	8	8	6-2 1/2	4-Neck	61.80
4	Demidoll (Garcia, M.S.)	120	BL	4	6	6-Head	6-1/2	5-Head	5-1/2	49.50
2	Onaccountofyou (Flores, D.R.)	120	L	2	5	4-2 1/2	4-8	4-7	6-5	12.40
3	Annie Bananie (Valenzuela, P.A.)	120	BL	3	7	7-3	7-1 1/2	7-Head	7-1 1/2	21.60
8	Miss Valliant (Alvarado, F.T.)	120	B	8	3	5-1 1/2	5-1	8	8	32.30

Fractional Times: 22.12, 45.41, 57.31, 1:10.22

Race 6 **PASS**

Pgm	Horse	Win	Place	Show
6	A La Reine	4.40	2.80	2.10
7	Sherri Shine		4.40	2.40
5	Lora and I			2.20

Race 7 **LOST**

Pgm	Horse	Win	Place	Show
6	Brave Act (GB)	14.80	7.60	4.40
3	Native Desert		15.60	6.20
5	Bouccaneer (FR)			4.00

With 2 underlays dominating the 6th race, both of them with the lion's share of corollaries and one-tww in the Validator readouts, Aline passed teh 6th race. It paid only \$4.40.

She then lost the 7th race, giving her 5 wins out of 6. That was a sign to her to pick up her marbles and go home. She did so even though readouts won the 8th, 9th and 10th races. They paid little and she went home without giving them a thought. She is not greedy.

After viewing Aline's sensational foray at Hollywood Park on Saturday, I had Shane download Sunday's Hollywood race to see if the track would yeild two straight days of Overlays. He downloaded the day and we saw some good profit potential, so off we went to the off-site book in San Bernardino.

HOL1128- 3 7.5D \$22,000
BOTTOM LINE -- BETTING LINE

HIDE#	PNCNAME	LdNT	SR	PR	BAL	LS	TIE	ODDS	TRKDISTS	M/L	DAYS	AGE
(2)	2 SLIM 1	1	80	87	5	24.3		EVEN	SA 7.0D	4/1	23	3
(3)	5 MISTY1		79	76	4	22.8		EVEN	SA 6.5D	4/1	30	3
(4)	6 HEART3		66	83	6	21.3		8-5	SA 7.0D	12/1	20	4
(1)	1 BRIDG4		64	79	5	14.0		7-2	DMR 6.5D	12/1	17	4

SYNTHESIS POWER RANKINGS AND FRACTALS

SYNTHESIS POWER REMANCE															PRIM SUPP												
#	PNCNAME	LdNT	SR	B A L P	L S T	PRIM		SUPP		FRACT			ESP	SCBL	E P R	L P R	C P R	T T R	H E	F W	F X	S P N	F X	E	T S	T P	
						LS	R	LS	R	E	L	N															
1	1 BRIDG4		64	5	3	4	28	4	20	4	4	4	4	EAR	8.0	4	4	4	4	4	4	4	4	4	4	4	4
2	2 SLIM 1	1	80	5	2	1	8	1	5	1	1	1	1	EAR		2	1	1	1	1	1	1	1	1	1	1	1
3	5 MISTY1		79	4	1	2	14	2	10	2	2	2	2	EAR	4.0	1	2	2	3	2	2	2	2	2	2	2	2
4	6 HEART3		66	6	4	3	20	3	15	3	3	3	3	EAR	4.0	3	3	3	2	3	3	3	3	3	3	3	3

SCBL Calculated by Program to Conform to Today's Pace
FRACTALS WEIGHTED: E=Early L=Late N=Normal
HOL1128- 3 7.5D \$22,000

THE VALIDATOR

PNCNAME	LdNT
1 BRIDG4	
2 SLIM 1	1
5 MISTY1	
6 HEART3	

TOT-R
4
1
2
3

TPV-R
4
1
2
3

TDC-R
4
1
2
3

V/DC-R
4
1
2
3

RACE 3

Off Time: 1:42 Time: 1:32 4/5

Weather: Clear Track; Fast

5	Misty Rain	120	Blanc B	10.20	5.80	2.60
1	Bridge to Freedom	122	Gomez G K		15.20	3.40
3	Maura's Diamond	109	Baze T			2.20


Scratched: NONE

\$1 Exacta 5-1 Paid \$73.60

\$2 Quinella 1-5 Paid \$94.20

HOL1128- 5 5.5T \$35,000

THE VALIDATOR



PNCNAME	LdNT
3 I WON2	
5 COLON1	
6 BOTTL1	1
7 STARS2	
8 WELL 1	1

TOT-R
3
1
2
5
4

TPV-R
2
1
1
3
4

TDC-R
2
3
4
5
1

V/DC-R
2
1
3
3
2

W

RACE 5

Off Time: 2:50 Time: 1:02 3/5

Weather: Clear Track: Firm

3 I Wonder Why
 2 Islander
 8 Well Stated
 Scratched: NONE

116	Gomez G K	11.20	5.80	3.40
118	Espinoza V		11.40	6.40
122	Delahoussaye E			3.60

In this 5th race at 5.5 furlongs on the Turf, we see an example of using just one Validator screen and nothing else. Under L (line) we never went back more than 2 races. The tie for 2, I won and WELL can best be resolved by using the program's entire readout array. However, the two horses can be separated on this screen by noting the difference in TOTAL: Energy and TPV. I won has superior Total Energy and Total Pace Velocity. WELL STATED has less Deceleration only. Horses with the least Deceleration might win at longer distances but seldom at 5.5 furlongs. Until you can use this screen **alone** to get winners, I suggest you incorporate BL/BL and Superscreen in your decision making process. COLON didn't fire, but depending on closing odds, would rate a bet.

HOL1128- 6 7.5D \$100,000
BOTTOM LINE -- BETTING LINE

HIDE#	PNCNAME	LdNT	SR	PR	BAL	LS	TIE	ODDS	TRKDISTS	M/L	DAYS	AGE
(1)	1	CHICH3	91	84	6	21.5		8-5	FPX 6.5D	4/1	29	4
(4)	4	CRIS 3x	85	87	5	20.3		9-5	HOL 8.5D	10/1	29	5
(3)	3	BRIGH2x	86	91	7	17.5		5-2	SA 8.0T	4/1	7	3
(5)	6	CENSO3	84	91	8	12.8		9-2	HOL 6.0D	7/2	29	4
(2)	2	SUPER1x	84	92	7	12.3		9-2	SA 8.5D	5/2	29	6
(6)	7	SPECI2x	81	84	9	7.3		8-1	FPX 8.5D	30/1	29	6

SYNTHESIS POWER RANKINGS AND FRACTALS

SYNTHESIS POWER RANKINGS AND FRACTAL																											
			B L T			PRIM		SUPP		FRACT					PRIM						SUPP						
#	PNCNAME	LdNT	SR	A L	L P	T T	LS	R	LS	R	E	L	N	ESP	SCBL	E R	L R	C R	T	H	F	F	S	F	E	T	T
1	1	CHICH3	91	6	1	1	13	1	6	1	1	1	1	PRE	1.0	2	1	1	5	2	1	1	1	1	2	1	1
2	2	SUPER1x	84	7	2	6	28	5	23	5	6	5	4	SUS	9.0	6	2	5	4	3	3	5	4	5	4	5	5
3	3	BRIGH2x	86	7	4	4	23	3	18	4	3	4	5	PRE	4.0	3	4	2	2	4	4	4	3	4	3	4	4
4	4	CRIS 3x	85	5	3	3	18	2	12	2	4	3	2	S/P	5.0	5	3	3	1	1	2	3	2	3	1	3	3
5	6	CENSO3	84	8	6	2	27	4	16	3	2	2	3	E/P		1	6	4	3	6	5	2	5	2	5	2	2
6	7	SPECI2x	81	9	5	5	34	6	30	6	5	6	6	E/P	5.0	4	5	6	2	5	6	6	6	6	6	6	6

SCBL Calculated by Program to Conform to Today's Pace
FRACTALS WEIGHTED: E=Early L=Late N=Normal

HOL1128- 6 7.5D \$100,000

THE VALIDATOR


RACE 6	PNCNAME LdNT	TOT-R	TPV-R	TDC-R	V/DC-R
	1 CHICH3	1	1	2	1
	3 BRIGH2	4	3	3	3
	4 CRIS 3	3	2	1	2
	6 CENSO3	2	2	5	4
	7 SPECI2	5	4	4	5

Off Time: 3:19 Time: 1:30

Weather: Clear Track: Fast

4	Cris the Swimmer	118	Desormeaux K J	41.20	15.20	6.80
8	Nijinsky's Passion	116	Ramsammy E		10.60	5.60
3	Bright Magic	115	Garcia M S			5.60
Scratched: NONE						

HOL1128- 7 9.0T \$500,000
BOTTOM LINE -- BETTING LINE



HIDE#	PNCNAME	LdNT	SR	PR	BAL	LS	TIE	ODDS	TRKDIST	M/L	DAYS	AGE
(4)	5 SUPER1	2	93	97	7 17.5			5-2	SA 9.0T	5/1	36	3
(2)	2 MANND1	2	93	97	7 15.3 *			7-2	SA 9.0T	8/1	36	3
(5)	6 FIGHT2	1	91	92	7 15.3 *			7-2	BM 9.0T	15/1	36	3
(6)	11 MULA 1	2	94	97	7 14.8			7-2	SA 9.0T	7/2	36	3
(1)	1 OUTST2	1	90	92	7 11.5			5-1	BM 9.0T	30/1	36	3
(3)	3 EAGLE1	2	93	97	7 11.0			5-1	SA 9.0T	8/1	36	3

SYNTHESIS POWER RANKINGS AND FRACTALS

#	PNCNAME	LdNT	SR	B L T				PRIM				SUPP				FRACT				ESP	SCBL	PRIM SUPP											
				E	L	T	A	S	O	L	R	L	S	R	E	L	N	E	L	C	T	H	F	F	S	F	E	T	T	P	P	P	P
1	1 OUTST2	1	90	7	6	6	26	4	17	3					1	1	1	LAT		5.0		6	1	6	6	5	1	1	6	1	3	6	1
2	2 MANND1	2	93	7	2	3	24	2	20	4					4	4	4	LAT		1.0		3	4	4	2	2	4	5	4	5	4	4	3
3	3 EAGLE1	2	93	7	3	2	27	5	21	5					3	6	6	LAT				2	6	2	3	4	6	4	5	4	6	2	4
4	5 SUPER1	2	93	7	1	4	21	1	14	2					5	3	3	LAT		1.0		4	3	3	1	1	3	6	1	6	2	3	2
5	6 FIGHT2	1	91	7	4	5	24	2	11	1					2	2	2	LAT		5.0		5	2	5	5	3	2	2	2	2	1	5	1
6	11 MULA 1	2	94	7	5	1	25	3	14	2					1	5	5	LAT				1	5	1	4	6	5	3	3	3	5	1	2

SCBL Calculated by Program to Conform to Today's Pace
FRACTALS WEIGHTED: E=Early L=Late N=Normal

HOL1128- 7 9.0T \$500,000

THE VALIDATOR

PNCNAME LdNT	TOT-R	TPV-R	TDC-R	V/DC-R
2 MANND1 2	3	2	4	2 P
3 EAGLE1 2	2	3	2	2
5 SUPER1 2	4	1	3	1 W
6 FIGHT2 1	5	2	5	2 S
11 MULA 1 2	1	1	1	1

RACE 7

Off Time: 3:53 Time: 1:45 4/5

Weather: Clear Track: Firm

5 Super Quercus 122 Solis A Q 11.00 6.20 4.00
2 Manndar 122 Desormeaux K J 8.20 5.20
6 Fighting Falcon 122 Gomez G K 7.60
Scratched: NONE
\$1 Exaeta 5-2 Paid \$30.40 ✓
\$2 Quinella 2-5 Paid \$32.60 ✓
\$1 Trifecta 5-2-6 Paid \$345.00 ✓

(TP)128- 7 5.0D \$11,000
BOTTOM LINE -- BETTING LINE

TURFWAY

PNcNAME	LdNT	SR	PR	BAL	LS	TIE	ODDS	TRKDIST	M/L	DAYS	AGE
6 SHORT1		84	78	5	21.8		8-5	CD 6.0D	3/1	17	3
1a SKY A1		84	78	5	21.3 *		8-5	HOO 6.0D	7/2	13	6
8 JA MA3		84	79	3	21.3 *		8-5	ELP 6.0D	5/1	14	7
5 MUSE 4		75	78	10	13.8		4-1	CD 6.5D	5/1	26	5
4 J. J.2		78	78	7	13.3		4-1	HOO 5.5D	15/1	26	6

SYNTHESIS POWER RANKINGS AND FRACTALS

				B L A S T	T O	PRIM		SUPP		FRACT			ESP		SCBL		PRIM								SUPP							
#	PNcNAME	LdNT	SR			L	S	R	L	S	R	E					L	N	E	P	R	R	C	T	H	F	F	S	F	E	T	T
1	1a SKY A1		84	5	2	2	17	2	10	2	3	2	2	SUS		3.0	4	2	2	2	2	2	3	2	3	2	1	2				
2	4 J. J.2		78	7	4	4	28	4	19	3	4	4	4	PRE		3.0	3	4	4	5	5	3	4	4	4	4	3	4				
3	5 MUSE 4		75	10	5	5	26	3	22	4	5	5	5	E/P		2.0	2	5	5	1	4	4	5	5	5	5	2	5				
4	6 SHORT1		84	5	3	3	15	1	10	2	2	3	3	PRE			1	3	1	4	3	1	2	1	2	3	1	3				
5	8 JA MA3		84	3	1	1	17	2	7	1	1	1	1	LAT		5.0	5	1	3	3	1	3	1	3	1	1	1	1				

SCBL Calculated by Program to Conform to Today's Pace
FRACTALS WEIGHTED: E=Early L=Late N=Normal

THE VALIDATOR

PNcNAME	LdNT	TOT-R	TPV-R	TDC-R	V/DC-R
1a SKY A1		2	2	2	2
4 J. J.2		4	3	5	4
5 MUSE 4		5	3	4	3
6 SHORT1		3	1	3	1
8 JA MA3		1	1	1	1

As an added bonus Aline Wager capped Turfway Park and showed wins in 8 of ten races. She passed most of the lower paying races but capitalized on THREE double digit Win mutuels, Three Trifectas, Four Exactas and a double digit PLACE horse.

#	PNcNAME	LdNT	TOT R
1	1a SKY A1		171.5
2	4 J. J.2		168.2
3	5 MUSE 4		167.4
4	6 SHORT1		170.6
5	8 JA MA3		172.4

Pgm	Horse	Win	Place	Show
8	Ja May Ka	15.80	8.20	2.80
1a	Sky Aly		6.40	2.40
7	Seven On Dice			2.10

Wager Type	Winning Numbers	Payoff
\$2 Pick 3	4-4-8 (3 correct)	153.80
\$2 Exacta	8-1	84.60
\$2 Superfecta	8-1-7-4	1,274.80
\$2 Trifecta	8-1-7	175.00

TP1128- 8 8.0D \$29,400
BOTTOM LINE -- BETTING LINE

			84										
HIDE#	PNcNAME	LdNT	SR	PR	BAL	LS	TIE	ODDS	TRKDIST	M/L	DAYS	AGE	
(1)	1	TWILI3	91	86	6	22.3		EVEN	TP	9.0D	8/5	21	4
(2)	2	STRUB1	87	86	6	21.8		8-5	CD	8.0D	5/2	9	3
(5)	6	JAKE 4p	83	81	5	19.3		2-1	OP	6.0D	3/1	30	3
(3)	3	DABNE4	78	86	5	16.3		3-1	CD	8.0D	4/1	14	4
(4)	4	GREEN1	70	81	8	9.0		6-1	BEU	8.3D	10/1	32	3

SYNTHESIS POWER RANKINGS AND FRACTALS

			B L T			PRIM		SUPP		FRACT					PRIM							SUPP					
#	PNcNAME	LdNT	SR	A	S	O	LS	R	LS	R	E	L	N	ESP	SCBL	E	P	C	T	H	F	F	S	F	Σ	T	T
				L	P	T										P	P	P	T	E	W	X	P	X		S	P
1	1	TWILI3	91	6	4	1	13	1	13	2	2	3	4	EAR		1	3	1	1	1	2	4	2	4	4	1	2
2	2	STRUB1	87	6	5	2	15	2	7	1	1	1	1	S/P	3.0	2	2	2	2	3	3	1	1	1	2	2	1
3	3	DABNE4	78	5	3	3	25	4	15	3	3	2	2	SUS	7.0	3	4	4	4	4	4	2	4	2	3	3	3
4	4	GREEN1	70	8	2	5	33	5	25	4	5	5	5	E/P	11.0	5	5	5	3	5	5	5	5	5	5	5	5
5	6	JAKE 4p	83	5	1	4	19	3	15	3	4	4	3	SUS	10.0	4	1	3	5	2	1	3	3	3	1	4	4

SCBL Calculated by Program to Conform to Today's Pace
FRACTALS WEIGHTED: E=Early L=Late N=Normal

TP1128- 8 8.0D \$29,400

THE VALIDATOR

PNcNAME	LdNT	TOT-R	TPV-R	TDC-R	V/DC-R
1	TWILI3	1	1	3	1
2	STRUB1	2	1	2	2
3	DABNE4	3	3	4	3
4	GREEN1	5	4	5	4
6	JAKE 4p	4	3	1	1

Pgm	Horse	Win	Place	Show
3	Dabney Carr	12.20	4.20	3.00
2	Strubinger (VEN)		5.00	4.00
6	Jake the Flake			2.40

Wager Type	Winning Numbers	Payoff
\$2 Exacta	3-2	43.60
\$2 Trifecta	3-2-6	90.20

ANOTHER EASY EXACTA AND TRIFECTA

TP1128-10 8.00 \$7.100
BOTTOM LINE -- BETTING LINE

		.76										
PNcNAME	LdNT	SR	PR	BAL	LS	TIE	ODDS	TRKDISTS	M/L	DAYS	AGE	
9	STATI3	73	72	5	23.5		EVEN	RD 8.5D	10/1	65	5	
12	LITVA1	65	72	5	20.0		9-5	BEU 8.3D	6/1	36	5	
5	NORTH1	65	78	3	19.8	*	2-1	CD 8.5D	5/1	10	5	
6	TACKL3	62	71	7	19.8	*	2-1	BEU 3.3D	10/1	8	9	

SYNTHESIS POWER RANKINGS AND FRACTALS

			B L T	A S O	PRIM				SUPP				FRACT					PRIM												SUPP																																																																																																																																																																																																																																																																																																																																																																																																																																																																																																																																																																																																																																																																																																																																																																																																																																																																																																																																																																																																																																																																																																																																																																																																																																																																																																	
#	PNcNAME	LdNT			SR	LS	R	LS	R	E	L	N	ESP	SCBL	E	P	P	R	T	H	F	F	S	P	N	F	Σ	T	T	P	P	P	P	P	P	P	P	P	P	P	P	P	P	P	P	P	P	P	P	P	P	P	P	P	P	P	P	P	P	P	P	P	P	P	P	P	P	P	P	P	P	P	P	P	P	P	P	P	P	P	P	P	P	P	P	P	P	P	P	P	P	P	P	P	P	P	P	P	P	P	P	P	P	P	P	P	P	P	P	P	P	P	P	P	P	P	P	P	P	P	P	P	P	P	P	P	P	P	P	P	P	P	P	P	P	P	P	P	P	P	P	P	P	P	P	P	P	P	P	P	P	P	P	P	P	P	P	P	P	P	P	P	P	P	P	P	P	P	P	P	P	P	P	P	P	P	P	P	P	P	P	P	P	P	P	P	P	P	P	P	P	P	P	P	P	P	P	P	P	P	P	P	P	P	P	P	P	P	P	P	P	P	P	P	P	P	P	P	P	P	P	P	P	P	P	P	P	P	P	P	P	P	P	P	P	P	P	P	P	P	P	P	P	P	P	P	P	P	P	P	P	P	P	P	P	P	P	P	P	P	P	P	P	P	P	P	P	P	P	P	P	P	P	P	P	P	P	P	P	P	P	P	P	P	P	P	P	P	P	P	P	P	P	P	P	P	P	P	P	P	P	P	P	P	P	P	P	P	P	P	P	P	P	P	P	P	P	P	P	P	P	P	P	P	P	P	P	P	P	P	P	P	P	P	P	P	P	P	P	P	P	P	P	P	P	P	P	P	P	P	P	P	P	P	P	P	P	P	P	P	P	P	P	P	P	P	P	P	P	P	P	P	P	P	P	P	P	P	P	P	P	P	P	P	P	P	P	P	P	P	P	P	P	P	P	P	P	P	P	P	P	P	P	P	P	P	P	P	P	P	P	P	P	P	P	P	P	P	P	P	P	P	P	P	P	P	P	P	P	P	P	P	P	P	P	P	P	P	P	P	P	P	P	P	P	P	P	P	P	P	P	P	P	P	P	P	P	P	P	P	P	P	P	P	P	P	P	P	P	P	P	P	P	P	P	P	P	P	P	P	P	P	P	P	P	P	P	P	P	P	P	P	P	P	P	P	P	P	P	P	P	P	P	P	P	P	P	P	P	P	P	P	P	P	P	P	P	P	P	P	P	P	P	P	P	P	P	P	P	P	P	P	P	P	P	P	P	P	P	P	P	P	P	P	P	P	P	P	P	P	P	P	P	P	P	P	P	P	P	P	P	P	P	P	P	P	P	P	P	P	P	P	P	P	P	P	P	P	P	P	P	P	P	P	P	P	P	P	P	P	P	P	P	P	P	P	P	P	P	P	P	P	P	P	P	P	P	P	P	P	P	P	P	P	P	P	P	P	P	P	P	P	P	P	P	P	P	P	P	P	P	P	P	P	P	P	P	P	P	P	P	P	P	P	P	P	P	P	P	P	P	P	P	P	P	P	P	P	P	P	P	P	P	P	P	P	P	P	P	P	P	P	P	P	P	P	P	P	P	P	P	P	P	P	P	P	P	P	P	P	P	P	P	P	P	P	P	P	P	P	P	P	P	P	P	P	P	P	P	P	P	P	P	P	P	P	P	P	P	P	P	P	P	P	P	P	P	P	P	P	P	P	P	P	P	P	P	P	P	P	P	P	P	P	P	P	P	P	P	P	P	P	P	P	P	P	P	P	P	P	P	P	P	P	P	P	P	P	P	P	P	P	P	P	P	P	P	P	P	P	P	P	P	P	P	P	P	P	P	P	P	P	P	P	P	P	P	P	P	P	P	P	P	P	P	P	P	P	P	P	P	P	P	P	P	P	P	P	P	P	P	P	P	P	P	P	P	P	P	P	P	P	P	P	P	P	P	P	P	P	P	P	P	P	P	P	P	P	P	P	P	P	P	P	P	P	P	P	P	P	P	P	P	P	P	P	P	P	P	P	P	P	P	P	P	P	P	P	P	P	P	P	P	P	P	P	P	P	P	P	P	P	P	P	P	P	P	P	P	P	P	P	P	P	P	P	P	P	P	P	P	P	P	P	P	P	P	P	P	P	P	P	P	P	P	P	P	P	P	P	P	P	P	P	P	P	P	P	P	P	P	P	P	P	P	P	P	P	P	P	P	P	P	P	P	P	P	P	P	P	P	P	P	P	P	P	P	P	P	P	P	P	P	P	P	P	P	P	P	P	P	P	P	P	P	P	P	P	P	P	P	P	P	P	P	P	P	P	P	P	P	P	P	P	P	P	P	P	P	P	P	P	P	P	P	P	P	P	P	P	P	P	P	P	P	P	P	P	P	P	P	P	P	P	P	P	P	P	P	P	P	P	P	P	P	P	P	P	P	P	P	P	P	P	P	P	P	P	P	P	P	P	P	P	P	P	P	P	P	P	P	P	P	P	P	P	P	P	P	P	P	P	P	P	P	P	P	P	P	P	P	P	P	P	P	P	P	P	P	P	P	P	P	P	P	P	P	P	P	P	P	P	P	P	P	P	P	P	P	P	P	P	P	P	P	P	P	P	P	P	P	P	P	P	P	P	P	P	P	P	P	P	P	P	P	P	P	P	P	P	P	P	P	P	P	P	P	P	P	P	P	P	P	P	P	P	P	P	P	P	P	P	P	P	P	P	P	P	P	P	P	P	P	P	P	P	P	P	P	P	P	P	P	P	P	P	P	P	P	P	P	P	P	P	P	P	P	P	P	P	P	P	P	P	P	P	P	P	P	P	P	P	P	P	P	P	P	P	P	P	P	P	P	P	P	P	P	P	P	P	P	P	P	P	P	P	P	P	P	P	P	P	P	P	P	P	P	P	P	P	P	P	P	P	P	P	P	P	P	P	P	P	P	P	P	P	P	P	P

SCBL Calculated by Program to Conform to Today's Pace
FRACTALS WEIGHTED: E=Early L=Late N=Normal

THE VALIDATOR

PNcNAME	LdNT	TOT-R	TPV-R	TDC-R	V/DC-R
5	NORTH1	2	2	1	1
6	TACKL3	4	3	3	3
9	STATI3	1	1	2	2
12	LITVA1	3	2	4	2

Pgm	Horse	Win	Place	Show
12	Litvak	7.60	4.20	2.80
9	Statistician		12.20	4.00
8	Shchi			2.80

\$2 Exacta

12-9

98.60

NOT ALL WAGERS ARE ON DOUBLE DIGIT WINNERS
BUT LOOK AT THE PLACE PRICE ON THE COUNTER-
ENERGY HORSE RANKED NUMBER ONE....

TP1128-10 8.00 \$7.100

#	PNcNAME	Ld	N	T	LATR[EARLY]	TOT	R
1	5	NORTH1	0.9			158.3	2
2	6	TACKL3	-11.0			155.7	4
3	9	STATI3	8.1			159.4	1
4	12	LITVA1	0.1			156.4	3

EX-L V-L M-L <E> M-E V-E EX-E

My reason for publishing readouts from races, especially those paying double digit mutuels, is NOT to dazzle you with Tester skills. I do it to confirm that if everyone followed directions they would get the same kinds of winners as consistantly as our beta testers.

This is the chief point of the black arrows. They point to salient factors that lead to wins. Arrows pointing to Comments and Early-Late Differences are important. However, MOST IMPORTANT are arrows pointing to the L, paceline used. With rare exception it was Best of Last 3. Only on a couple of occasions did testers go back 4. When they did it was for an obvious reason. There was an INTERVENING Line that was NOT of compatible Distance, Surface or Competition Level. When I refer to DISTANCE I mean the difference between Route and Sprint.

NO attention was paid to Pace Setter, Early or Late Pace, Median Energy or any other factor we might have considered important in yesterday's Methodology and NO Classical "HANDICAPPING" factors were ever used.

When the VALIDATORS and BL/BL differed, VALIDATORS took precedence. If a horse ranked in the top 3 VALIDATORS, Superscreen Corollaries were completely ignored.



**WISHING YOU
A WINNING
SEASON !**

***Happy Holidays
from O. Henry House
& the Sartin Family...***

*Doc ~ Mary Sr.
Mary Jr. ~ Shane ~ Mike
and Aline*

For your Sartin Toolbox...

Manuals:

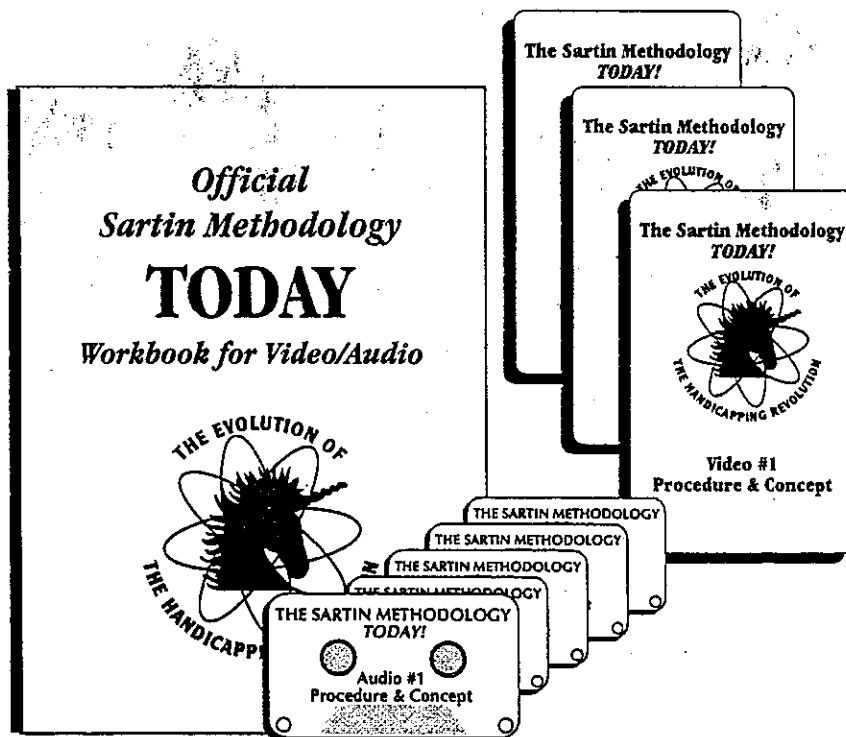
THE 55 % SOLUTION ~ \$32
Still the best treatise on Exactas, the Counter-Energy horse and other ways to get both Win and Place

THE TANDEM RACE ~ \$29
Clients who correctly follow the Tandem procedure in this work report continuous success. Some handicap Tandem races ONLY, for their profits!

THE PSYCHOLOGY OF WINNING ~ \$25
A best-seller among clients and non-clients alike. 80% of all handicapping success lies in the subject matter and solutions offered in this booklet.

CHAOS MANUAL ~ \$25.00
An in depth study of Chaos theory applied to handicapping

Videos/Audios...



Got the tapes and workbooks. Just want to tell you how great they are. Doc has done a first class job on these. If more people would take the time to study these I believe problems would drop drastically!
D.W., Nebraska

Was just doing so-so until I watched your video tapes. Turns out I didn't understand the REALITY as it is today until I watched the tapes. Now I'm really doing great....
G.F. Colorado

3 Videos Set ~ \$99.00

5 Audios Set ~ \$60.00

Include workbooks

....thank you for Video Tape #3. The best thing I've ever been exposed to. C.D. Minnesota

Audio tapes are sound portion of videos. The same information is contained in both.



This
NO-NEED-FOR-HANDICAPPING
program includes an exciting new **COMMENT LINE** feature,
allowing you **BREAK TIES LIKE MAGIC!**

THE VALIDATOR

For those not getting optimal results from your current handicapping program..THIS PROGRAM IS THE ANSWER. Featured in this issue, THE VALIDATOR has been tested by those already doing well with Synthesis - and they all agree, THIS IS THE EASIEST AND THE MOST PROFITABLE PROGRAM they have ever seen.

***“The best of Synthesis
combined with the
new VALIDATOR screens...”***

**GET BOTH MANUAL ENTRY AND TRACKMASTER VERSIONS OF
THE VALIDATOR
FOR THIS SPECIAL PRICE THROUGH JANUARY 24, 1999***

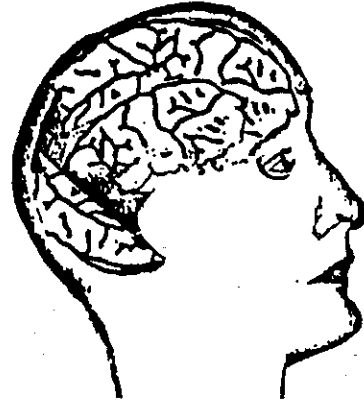
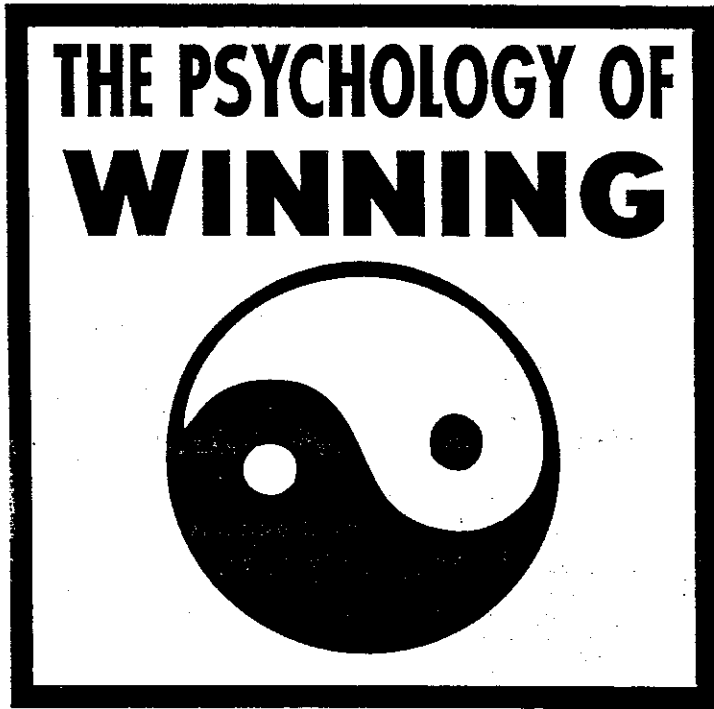
\$450

*We've extended the special offer because many of you didn't receive your Follow Up 77 until mid-December (it was mailed November 22)

*For those who purchased SYNTHESIS after August 1, 1999: **\$250***

NOTE: Available only to clients with advanced Sartin programs. Call the office if you need clarification
If you are already making optimal profit,
you **DO NOT NEED THIS PROGRAM.**

Howard G. Sartin, Ph.D



Successful Wagercapping is a **head** game. It is not like Craps, 21 or Roulette. Certainly nothing like playing the slot machines, although most horseplayers "play" it as if it were. In a "head game" there is little if any luck. Whenever someone says to me: "Good

luck", I always reply that it's not luck - good or bad - it's **skill**. Except for the rare savant, skill is the handmaiden of experience. Experience comes from making mistakes, correcting them through personal effort and then benefiting from them until success becomes a habit.

Winning or losing is a HABIT. It is just like any other habit. The trouble is most Horseplayers refuse to believe it. You should.

Habit is something that bonds stimulus and response. The more we respond in a certain way to a given stimulus, the more that response becomes automatic. i.e. HABIT. Those with the habit of alcohol dependency, addiction to narcotics or gambling, are responding to an initial stimulus of pleasure, usually in the form of mood elevation.

If you listen to the conversations of horseplayers you'll observe that they almost always make some reference to a *big hit*, or at least the HUGE exotic payoffs they "almost" had. This kind of rationalization helps them to tolerate sustained periods of losing. As their tolerance level rises, their minds are bonded by the stimulus of the hopeful dream and the response - or HABIT - of accepting the fact that the dream is elusive but always ready to come true, if ONLY.....

The potential of their dream fulfillment is always present in the **next** race, or the next one after that; and on rare occasions it happens. This recharges their ego and emotions enough to sustain them through another dry spell. With each losing period their tolerance for loss grows, resulting in a losing habit that is just as hard to break as any other addiction.

Through the advance technology of race track computer systems monitoring the tote board and the analysis of ticket purchase and payouts, racing associations have been able to determine that on any given racing day, 5% win, 20% break even and 75% **LOSE**. The 5% who win are almost never the same people. Hence, the conclusion that fewer than 2% win regularly and less than ONE percent win enough to call it a living.

However, most of us do not aspire to make our entire living from Wagercapping. The simple reason being that few of us are emotionally equipped to consistently wager enough to fully capitalize on our R.O.I. potential. Many of us have the ability to make \$37,000 in a single day, as one client did at Breeders' Cup. But few have the cold calculating ability to accept such wins with equanimity and go back the next day and wager as before.

One statement made by the National Council on Problem Gambling is true: Most people who become pathological gamblers do so after a BIG HIT! This is a danger we all face. After Tom Brohamer hit a sizable Pick Six several years ago, he found himself dissatisfied with going to the track and only profiting one or two hundred dollars a day. He was bright enough to realize that the strange gnawing at his gut was a precursor to a wild urge to splurge, to always go for the big hit.

After some reflection he quit going to the track for a full month and played golf. This period of abstinence and exercise put his mind back into focus, eradicated the stimulus of greed and the temptation to alter his consistent WIN habit. Now he seldom, if ever, "plays" the Pick Six. He mixes grinding out an ancillary living with lots of golf.

For most of us winning a couple of hundred dollars a day is more than adequate reward for our efforts. Since it can and is, being done by betting only \$20 a race, \$10 on each of two win wagers per race, as demonstrated on hundreds of Wagering Decision Form 20 race cycles, we don't have to suffer comfort level neurosis.

Peter Tolan, as you know, is one who doesn't object to his name being used. Others forbid it. They don't want to be bothered with questions about "How they do it." The truth is they do it exactly the same as the rest of us. They just bet more.

AND, they follow directions.

Most clients now have the **habit of winning**. One told Aline Best that today he considers a mere \$10 win mutuel as less than average when, only a few months ago he thought double digit mutuels were just something to covet. "I'm spoiled," he said. "The Methodology has raised my expectations so high I'm in the habit of getting much higher returns."

That's a *good* habit. Those who don't have it yet, are either new or they cherish their losing habit since it brings them the same kind of hidden rewards that border on true Masochism.

GAME PLAYING

With notable deviations Wagercapping has many similarities to Poker. As played legally in Nevada and Atlantic City, et al, Poker is even more of a head game than chess. Players win or lose, not to the House, which takes but a small percentage or fee - like the Track Take, but from **each other**. It is governed by a quasi pari-mutuel system built in to the rules of the game itself.

Poker has rules. So does racing. Handicapping has none. However, the way one manipulates the "game" has no rules beyond those of the game itself: no cheating, the number of cards one can hold at any given time, etc. How one works the game within those rules, **has no rules**. When a hand holds no VALUE, a good poker player usually folds. That's comparable to PASSING a race without even having to put up an ante other than cost of admission and program..

On the other hand, the art of bluffing other players is paramount in Poker. In successful Wagercapping the bluff option is absent. You just can't bluff the pari-mutuel apparatus. However, the term "bluffing" is comparable to "*psyching out*." In Poker it's the other players. In Wagercapping it's psyching out yourself. Every famous athlete of our time has dwelled on it. Muhammed Ali, Michael Jordan and Joe Montana have been most eloquent about it.

Recognizing Handi/Wagercapping as a "Head Game," I have always been bewildered by persons who say they're not too bright or did badly in school or in some other manner discount their intellect or capacity to win. They justify their masochism by refusing to follow directions.

In truth they're playing a life game called "Poor Little Me." also known as "Wooden Leg." This is a subconscious (or conscious) plea to get sympathy that worked so well during their childhood. This little game leads to another, called "Do Me Something." Both embody the tired old phrase, "Who do you like"? Always asking questions but never acting upon the answers. As children, when they cried, their diapers were changed for them. They were fed and coddled, all as if by magic.

They never grew completely out of this infantile stage. They still want everything done **for them**. Horse racing draws a lot of persons who cling to this notion.

In truth most of these people aren't stupid and are really quite capable of succeeding. But, they have received so much sympathy from playing these and other "Games" that the payoff from the games themselves offer more reward than doing something *for themselves*.

For those not familiar with the definition "Game," it is:

"A series of ongoing transactions that have a CONCEALED motivation heading progressively to a well-defined PAYOFF."

Anyone who read Dr. Eric Berne's ***Games People Play***, will recognize themselves. Someone even wrote a song using Eric's title:

Oh, the games that people play.. now Every night and every day... now Never saying what they mean, Never meaning what they say...

Horse players are almost all game PLAYERS. They buy Tout Sheets, go to trackside conclaves where they get three selections per race, a bear claw, a cup of coffee and, if they're lucky, a program. Some even pay more for the *MIS*information they get from various alleged information sources than they actually bet per day. That's a sad fact. They don't really work at attempting to handicap the races by themselves, they're too deeply into the game of "DO ME SOMETHING."

The question is, quite naturally: How does one acquire the WINNING HABIT? Quite simple really, if one truly wants it: First, accept the fact that Handi-Wagercapping *is* a Head Game and use your head.

Toss into the garbage all those crazy things you did and felt you believed in when you were losing. Dare to be different. Stay away from racing buddies. Avoid all conversations, books, articles, et al, that have not made you a winner. Remember, self-proclaimed Racing Experts are often bigger game-players than their victims.

If you use your head and read each issue of the Follow Up several times, you'll find answers plus documented evidence of the fact that those following our guidelines are winning and so

testifying in Vox Populi. Tell yourself, over and over and over:

IF IT CAN BE DONE I CAN DO IT!!!

This was my problem in the beginning. I had never met or seen a consistent winner. I asked myself, "Am I on a fool's errand, trying to come up with a Method for consistent WINNING?"

Then I met a man named Sam Sedgwick at the Mexicali Racebook. He won every day because he could pick predictive pacelines. After a while he'd pick the lines and I would put them through the Methodology of that time which was on a Texas Instrument Programmable Calculator. Not even a computer. We won several 5-10's (same as a Pick Six) and lots of consolations and, Sam's favorite, the multiple race win-place parlay. I learned from Sam. The most important thing I learned was that he seldom went past the third running line back.

Now here's an exercise you can use to learn what I did:

Go back over every winning race in all your Follow Up's. Look under L for line used. You'll find the vast majority will be the BEST of the LAST THREE at a COMPARABLE distance, surface and competition level.

Non-winners have a hard time with the word comparable. Dictionaries sell at drug and discount stores for \$1.98. Luckily, I learned the meaning of the word back in the third grade. So, in fact, did YOU! Those pretending not to understand its meaning are playing the game "DO ME SOMETHING." They're looking for a Patsy, often myself, Shane or Aline (sometimes even a stranger) to give them their "PAYOFF" by claiming that they just **can't** (won't) understand. In the world of psychotherapy, the word CAN'T always translates as "WON'T." Since the time of Freud, the translation has been correct.

If it's actually possible that someone CAN'T understand, they should NOT be wasting their family income on horse racing:

Perhaps the above prescribed exercise will be the key to attaining the HABIT of winning. If one stares long enough at the numbers under L (for Line) and become mesmerized by the number of 1's 2's and 3's, one just might realize that all those little reasons for NOT using the BEST of the LAST THREE, comparable, are archaic examples of what MIGHT have been true in YESTERDAY'S racing.

I'm also guilty of having subscribed to certain things in the past that are **no longer valid** or necessary to consider. Things like isolating the pace-setter, analyzing percent Median or when a horse may or may not catch the leaders, **analyzing** anything but the vital readouts and the Mutuel Price. When I discovered that all such analysis or observation was no longer tantamount to winning, I admitted my errors and corrected them through Sartin Methodology **TODAY** computer programs, the best being the VALIDATOR.

In short, I changed my habit pattern. When certain, now archaic habits no longer produced a profit, I broke those habits and focused on finding new ones that do produce consistent profit. Now when a client asks me about some of the factors that contributed to the old habits, I have difficulty in answering. It's embarrassing to me, having to admit that some of the old stuff is no longer applicable.

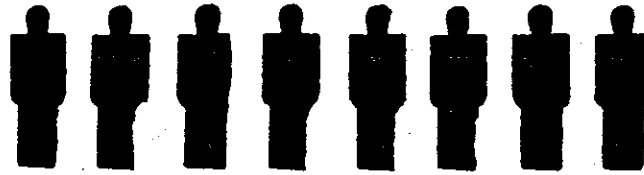
Apparently it's not embarrassing to most competitors. They're still touting for sale books, articles and computer programs based on my concepts of the 1980's.

ANSWER:



1 PER 9 PEOPLE (11%)

= ONE WINNER ANY GIVEN DAY!



EIGHT PEOPLE LOSE ANY GIVEN DAY!



1.8 PEOPLE BREAK EVEN EVERY DAY (20%)

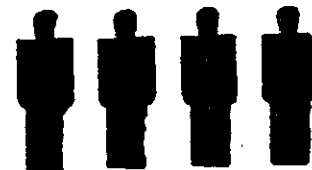
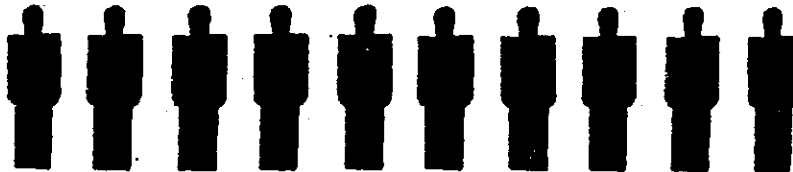
Question: How well do handicappers perform at the races during any given year?

ANSWER:



1 PER 21 PEOPLE (4.7%)

= ONE WINNER ANY GIVEN YEAR!



TWENTY PEOPLE LOSE ANY GIVEN YEAR!

OUT OF EVERY 21 PEOPLE, 4 BREAK EVEN EVERY YEAR (19.4%)

THE IDEA FOR THIS GRAPHIC COMES FROM PROFESSOR DAN DI PICO. AS YOU CAN SEE HIS STATS ARE MORE OPTIMISTIC THAN THOSE I COMPILED FROM A PARI-MUTUEL REPORT FROM A COMPOSITE OF 100 NORTH AMERICAN TRACKS. I'M TRULY DELIGHTED WITH HIS OPTIMISM, IT OFFERS MORE HOPE TO NON-WINNERS, WHICH IS EXACTLY WHAT THEY NEED.

MEET THE PRESS

JIM BRADSHAW called me about an article in a recent Racing Form. It was titled "What Ever Happened to Pace?" and was penned by famous racing writer Joe Hirsch. His thesis: There is NO MORE Pace. The argument being that jockeys are getting smarter and they no longer try to take an early lead. According to Joe, they now run a leisurely 1st quarter or half, depending on race distance, supposedly reverting to British style riding, dominant in the U.S. until the late 1920's.

Jimmy's comment on the article is unpublishable: my editor won't allow four letter words in the Follow Up.

It boils down to what DRF and most other so-called experts consider PACE. To them, it is nothing more than 2nd Call averaged with Final Time. (The one big flaw in Taulbot's Pace Calculator). Mr. Hirsch, famous expert though he may be, was writing about EARLY Pace. Andy Beyer, Len Ragozin and many other authors, are similarly confused. What they call pace is NOT PACE. Not even close. Their incorrect application of the term is the reason we use the terms INCREMENTAL Velocity, Deceleration and Energy Distribution instead of Pace. **The difference** is monumental to the extreme.

For years I've been exposing the fact that a horse that runs Early ONLY; doesn't win nearly as much as in the past. When they do win, they usually pay mutuels too low to worry about.

This change in racing (which has long been identifiable in the Pace Launcher Series, Synthesis and now in the VALIDATOR) is not new to us. But differences in Incremental Velocity/Deceleration and Energy Distribution are still as potent and real as ever. There are still Leaders, Pressers and Followers, Early, Sustained, Presser (ESP). For a Daily Racing Form writer to deny this reality is perhaps another tribute to the prejudicial thinking of the new DRF Editor-Publisher and has no basis in reality.

This could be a reason that of twelve DRF "Experts" only one made Charismatic Kentucky Derby choice. They also did not make many enviable predictions in the last Breeders' Cup.

We should all write and thank DRF Editor Steve Christ for this bit of idiocy about "Pace." If this article is taken seriously by the masses, our mutuels will go up.

Perhaps the author of the erroneous piece, "Whatever happened to Pace," (Early Pace) was inspired by the changes seen at Monmouth Park in New Jersey. In the past this has been a track most notoriously biased toward Early and wire-to-wire winners. However during the last meet the Early bias decreased to its lowest point in over a decade. It still had a plethora of wire-to-wire finishers. Yet, at ALL tracks, their number has decreased at a greater proportion than at Monmouth. This decrease should not surprise Follow Up subscribers. We've been discussing it regularly since 1993.

Table I
Beaten Lengths of the Winner at the Second Call: Monmouth,

Dirt Sprints	1998	1997	1996
Within 3 lengths of lead	93%	90%	86%
Wire-to-wire winners	36%	52%	50%
Dirt Routes			
Within 3 lengths of lead	85%	95%	84%
Wire-to-wire winners	22%	38%	27%
Turf Routes			
Within 3 lengths of lead	83%	79%	82%
Wire-to-wire winners	17%	21%	22%

In the lead at 2nd call: winners down from a 1996-97 average of 51% to 36% in 1998. Monmouth was the prime example of an Early Pace track in sprints for many years. Other tracks, universally referred to as "Speed Tracks," have undergone a greater transition favoring Pressers. OR being within about 5 lengths off the lead at the second call, both of which by our defined standard is: OTHER THAN EARLY. Such horses are Sustained Pressers or Sustained, depending upon HOW late the run against the leaders.

The EARLY figures for routers at Monmouth have also taken a sizable drop. Only 22% last meet compared to an average of 65% the previous two years. Monmouth remains fairly early. 17% Turf winners running Early is an anomaly well above the national average. These figures would have more meaning IF accompanied by average win mutuels. Even though fewer "EARLY" horses are winning at Monmouth and elsewhere, the mutuels for designated in-the-lead type horses are LOW!

*Chart courtesy Vince Doyle/American Turf Monthly.



Now for some excerpts from a recent *Horseplayer Magazine* article by Bill Finley, who is the son of the late Joe Finley (William Scott). Joe Finley was a dear friend and a fine man so I read the article with total belief. I felt that his son would never stretch the truth. I hope he didn't since the article is a most revealing Q&A session.

From the article entitled PRO Players, *Horseplayer Magazine*, March/April:

The questions are asked by Finley and the answers come from Richie Schwartz, heralded as New York's biggest bettor and top winner. Here are a few excerpts I found most interesting.



—by Bill Finley—

For years, Richie Schwartz, 56, ruled the pari-mutuel windows at the New York racetracks like few others ever have or probably ever will. For him, betting on horses was more than just a passion and much more than just a hobby. It was his job. Schwartz lived the dream of many a horseplayer—betting full-time and making a substantial living at it. Among New York horseplayers, he was a legend.

HP: More specifically, how much were you betting and how much were you making?

RS: I bet a lot. I could've been betting \$20,000 a day, maybe more. I made a lot, a lot of money over an eight year period and invested it well. With my investments, I was making about 15% a year on average.

HP: Can just anybody, armed with sheets and determined to work hard, do this?

RS: No, it's a talent, something you just can't teach to someone. You can help people, show them what constitutes an edge and some other mechanical things, but it's more a matter of judgment.

Even if you're among the best, you probably are only working with an edge of about 5%, so if your judgment is off just a little bit, there won't be a profit. If you're just a little better than everybody else, there won't be any profit because first you have to make up the takeout and anything over that is hard. There's not much to work with.

RS: The only thing I see that's left is having a good understanding of pace figures. I don't think there's much of an edge left in the sheets anymore. What I'm doing now with pace figures is what I used to do with the sheets.

First Schwartz says he was making a profit of "15% a year on bets of "\$20,000 a day, maybe more." Wow! But when Finley suggests that his edge is only 5%, he doesn't disagree. But, at 15% profit I wouldn't even bet \$30 a day, much less 30 THOUSAND, Would you?.

Second, why did Finley ignore Schwartz' claim of 15% and automatically reduce it to 5%? Perhaps it's because Finley has joined those well-known experts who claim that a 5% EDGE is good. In Blackjack, maybe.

Then Finley refers to the "TAKE" as having a negative effect on our profits. The Odds you SEE on the Tote Board are the odds YOU GET! WE DO NOT have to make up for the "Takeout." All such statements to the contrary are inexcusable fallacies!

HP: But what would you tell someone who wants to be a more successful horseplayer?

RS: I try to see the whole picture.

HP: Do you see anything in particular that habitual losers seem to do wrong?

RS: You always have to stay one step ahead of everyone else and not be satisfied. You have to be somewhat paranoid if you start to lose and need to try to figure out the reasons. You have to hate losing. You can't say 'I'm just unlucky.' You have to figure out what you're doing wrong.

HP: How often do you play now?

RS: I've made enough money that I don't have to work, so I spend a lot of my time playing bridge and concentrating on my investments. I bet a little, when I feel like it. I'll still bet pretty good, maybe \$10,000 or \$15,000 a day.

"Look at the WHOLE picture." I guess my holistic approach isn't so original after all. "You have to HATE losing!" A few of our clients still seem to have that old unconscious desire to lose. We have shown ample evidence of the fact that anyone who truly wants to win, will win with our advanced programs, especially the VALIDATOR.

I was happy to see that Schwartz gave up on The SHEETS and went to so-called "PACE" figures and has now cut down his bets to "only" between ten and fifteen THOUSAND dollars per day..... ONLY?

One thing about the article, it gives me more respect for those few clients who, even though some may risk erroneous deviations from instructions and are non-winners, still do better than New York's alleged biggest bettor and, according to Jerry Brown of Thorograph, quoted in the article, Richie is also the "BEST handicapper around."

HORSEPLAYER MAGAZINE, along with American Turf Monthly, didn't include CHARISMATIC in a Pre-Derby analysis. In the Derby Issue of the new, improved Daily Racing Form, only 1 of 12 selectors mentioned the horse our computer programs had on TOP.

Now, here's another quote from a famous racing author published in a well-known Racing Periodical. This man apparently receives the Follow Up from some source. Even though we include many photocopied Win Tickets, he writes this in reference to most of our double digit WIN wagers: "By ANY SANE or reasonable Handicapping Standards most of the winners chosen by Sartin clients could NOT be a pick."

That's a Mainstream Truth, based on the Mainstream's definition of "Sane" and "Reasonable." By this standard the 95% of all those Mainstream handicappers who are non-winners, are sane and reasonable. Which goes to prove that sanity and conventional reasoning are not the way to win consistently.

Beside, who expects SANITY from a psychologist?

Successful Wagercapping is a field that is totally beyond all conventional definitions of sanity or logical reasoning, i.e. "RULES."

Client News...

Vaughn Youtz just sent us his prize-winning color photo of Laffit Pincay crossing the Santa Anita finish line to break Bill Shoemaker's all time win record. Vaughn is a staff photographer for a major newspaper and free lanced for the Daily Racing Form at Breeders' Cup.

CONGRATS (AGAIN) TO PETER TOLAN

Emmy winning client Peter Tolan strikes again! This time an Academy Award nomination for Writing on a really great film: *Analyze This*.

**INSTALLATION INSTRUCTIONS FOR ALL SARTIN PROGRAMS
(except Validator for Manual Entry)**

Read ALL instructions before beginning installation process!!

IMPORTANT

For TrackMaster download programs, before you can install the program, you must create a Directory named TRKMAST on the "C" drive of you computer.

If you have downloaded from TrackMaster for a Sartin Program in the past and already have a TRKMAST directory set up in you computer, skip to Step 5.

To set up a TRKMAST directory:

WINDOWS 95/98 -

1. On the desktop, click on Start, move the cursor up to Programs, then to the right and down to the MS-DOS Prompt. Right Click on the MS-DOS prompt and while holding the right button down, drag the Icon to an empty spot on the desk top. Release the button. Either the MS-DOS Prompt will now be located on the desk top or a drop-down window will open showing "move here" as one of the options. Click on "move here". For all future access to DOS, simply double click on the MS-DOS Prompt on the desk top.

DO NOT use the "shut down and restart in DOS " option that is part of the shut down procedure as a way to access MS-DOS as this can cause problems within the program.

2. Double click on the MS-DOS Prompt. You will see the following: C:\WINDOWS>

3. At this prompt, type CD\ [Enter] which will produce C:\>

4. Now type in: MD TRKMAST [Enter]

FOR NON-TRACKMASTER PROGRAMS

**If you are installing a program that does not use the Trackmaster Download,
substitute MD HRACE for MD TRKMAST in Step 4 above.**

5. Place the disk in the A: drive

6. Type in a: [Enter]

7. When the A:\> prompt appears, type INSTALL [Enter]

When the installation is complete, remove the disk.

WINDOWS 3.1 OR NO WINDOWS

1. From the C:\> prompt, type in MD TRKMAST [Enter]

FOR NON-TRACKMASTER PROGRAMS

If you are installing a program that does not use the Trackmaster Download, substitute MD HRACE for MD TRKMAST in Step 1 above.

2. Place the disk in the A: drive
 3. Type in a: [Enter]
 4. When the A:\> prompt appears, type INSTALL [Enter]
- When the installation is complete, remove the disk.

WARNING !

If you attempt to run these programs from the floppy disk itself, you will run into problems and the program will crash. Our programs are designed to be installed to the hard drive only!

TO RUN PROGRAMS

SYNTHESIS TrackMaster MULTI-TRACK -

Double Click on the MS-DOS Icon

At the C:\WINDOWS prompt, type CD:\SMT [Enter]

At the C:\SMT prompt, type SMT [Enter]

VALIDATOR TrackMaster VERSION -

Double click on the MS-DOS Icon

At the C:\WINDOWS prompt, type CD:\VALT [Enter]

At the C:\VALT prompt, type VALT [Enter]

ALL OTHER TRACKMASTER DOWNLOAD PROGRAMS

Double Click on the MS-DOS Icon

At the C:\WINDOWS prompt, type CD:\TRKMAST [Enter]

At the C:\TRKMAST prompt, type the code marked "To Load Program" shown on the disk and hit Enter.

HAND ENTRY OR BRIS DOWNLOAD PROGRAMS

Double click on the MS-DOS Icon

At the C:\WINDOWS prompt, type CD:\HRACE [Enter]

At the C:\HRACE prompt, type the code marked "to Load Program" shown on the disk and hit Enter.

Downloading from TrackMaster

When you have your Trackmaster account set up and have a user name and password you can begin downloading Race Cards and Charts.

DOWNLOADING TRACKMASTER PP'S

After connecting to the Internet, enter the following address in the "location" or "address" line on the Internet browser screen:

<http://www.axcis.com/cgi-bin/axprodlist.cgi?tp>

When you have reached the screen that looks like this, bookmark the location in your computer so that you can return directly to the correct site in the future.



TrackMaster/PP Race Card Selection

- [Click here](#) to jump to available RACE CARDS.
- [Click here](#) to view detailed INSTRUCTIONS on how to download files.
- [Click here](#) to CHANGE your billing INFORMATION or Password
- [View a DESCRIPTION](#) of the PDF FILE layout (Acrobat Reader Required)
- [Click here](#) to download the "BULLFIND" download UTILITY.
- [Click here](#) if you are just browsing and want MORE INFORMATION about TrackMaster PPs.

NOTE: If you have subscribed to Trackmaster Plus, enter the following address:

<http://www.axcis.com/track/>

and click on the Download Racecards box on the right of the screen

Use the down arrow to scroll down to the track you want to download.

Click on the date of the card you want. **IMPORTANT:** Each date is shown twice, once in the PP format and again for the Adobe PDF version. **MAKE SURE YOU HAVE CLICKED ON THE PP FORMAT as marked.**

insert 1 1/4"

The next screen will be a confirmation of the track and date you have selected You must scroll down to reach the line showing: Click here to download (trk & date) r.exe. If the track and date are correct and the "r.exe" follows the track and date, click on it to begin downloading..

TrackMaster PP's Message of the Day

This will count as a download on your AXCIS Account

By Downloading the file below you agree to the AXCIS Terms of Service

[View the Terms of Service Agreement](#)

[View Detailed Downloading Instructions](#)

Make Certain you save the Racecard to the RCDATA Directory

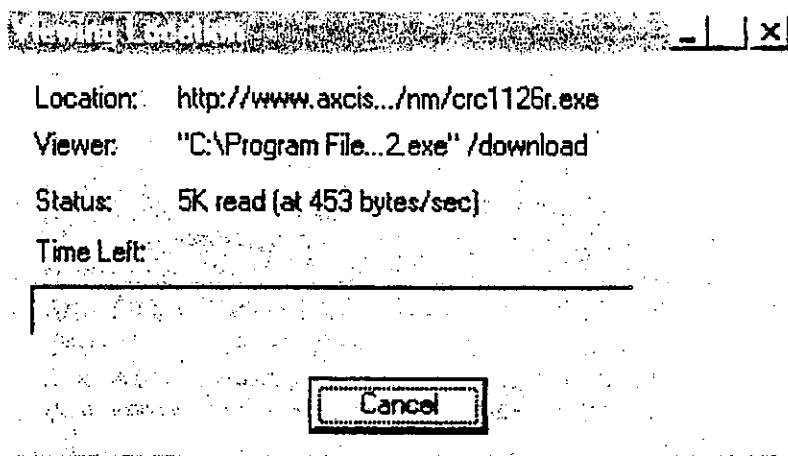
[Click here to download crc1022r.exe](#)

Depending of the browser you are using and your ISP, at some point during the above process, two separate boxes will appear:

Trackmaster's "What's Hot" advertising page. Click on the X in the upper right corner of the box to remove this page and;

The box that asks you enter your User Name and Password. If you have problems with this, try switching from "Caps Lock" on to off or vice versa.

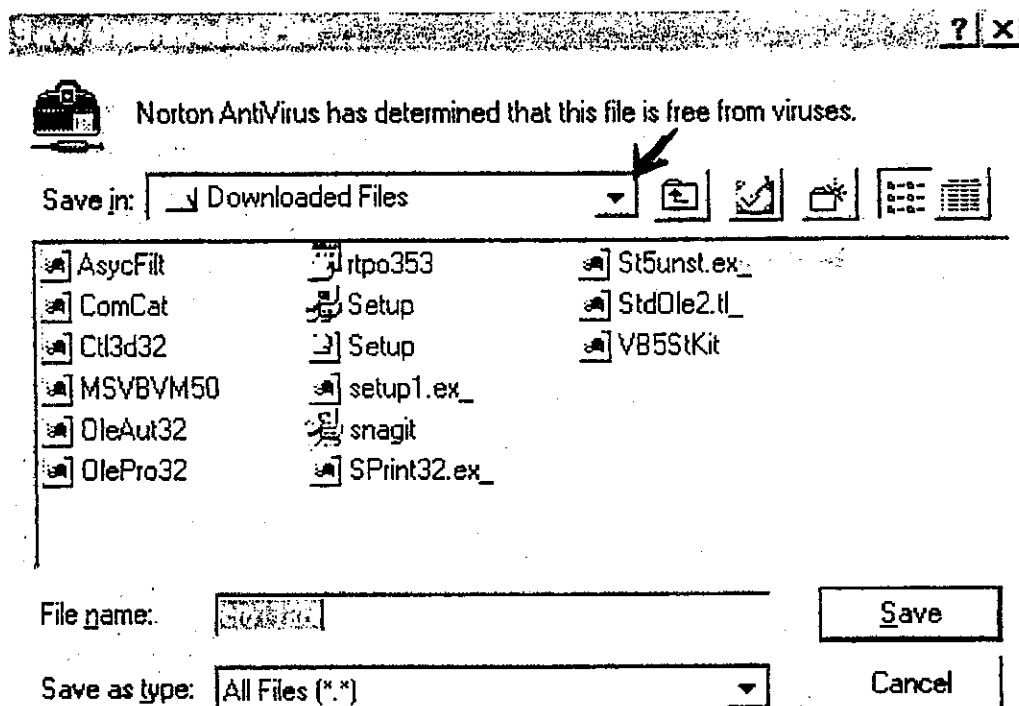
After you have clicked on the line showing the track and date a box will appear titled "Viewing Location". The downloading process will be shown in KB and when finished will show a message similar to "spawning external viewer"



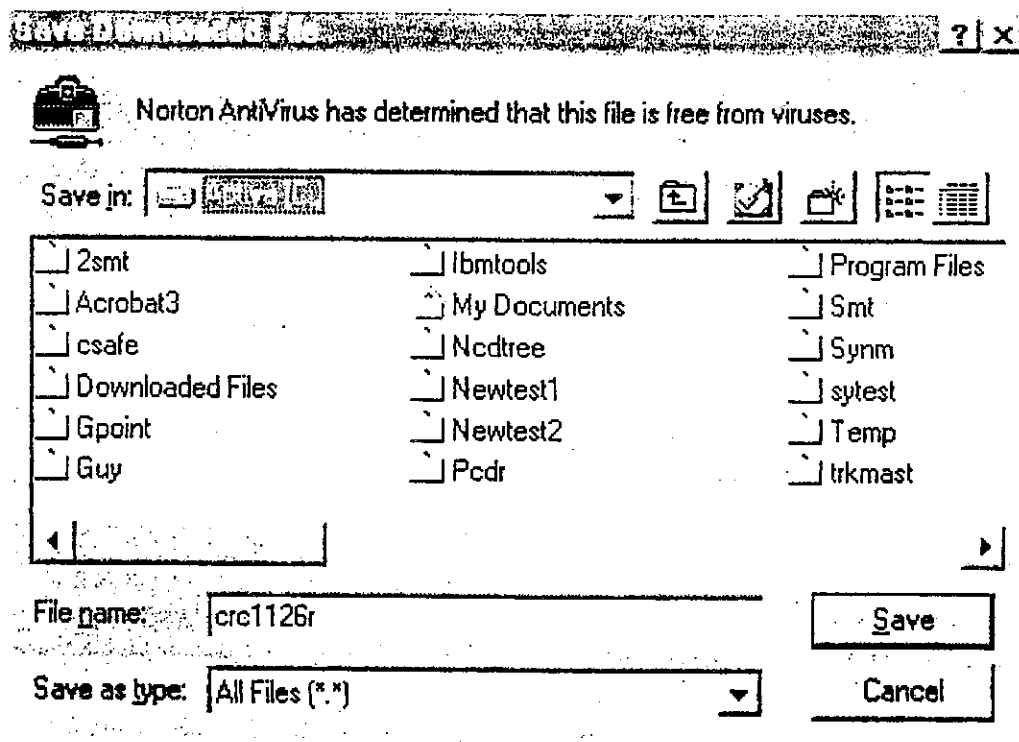
If you have an anti-virus program (Norton, McAfee, etc) you may have to click on the icon for that program in the bottom tool bar in order to bring up the "Save Downloaded File" box. When this box appears for the first time you will need to make sure that the "trkmast" file is shown in the proper location.

This is done as follows:

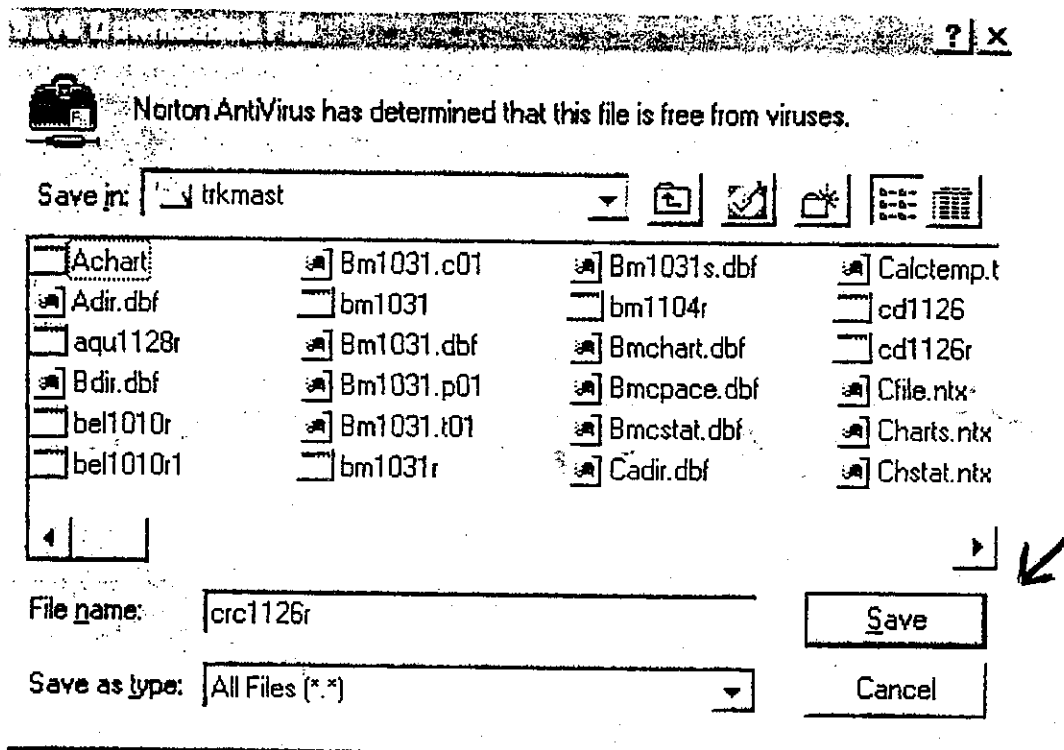
Click on the down arrow at the right side of the "Save in" box. This will drop down a window giving you several options. Click on the "C Drive"



When "C" appears in the "Save in" box, search for the 'trkmast' folder in the section below.



Double click on the 'trkmast' folder. This will put Trkmast in the "Save in" window. No matter how many times you download, Trkmast will stay in this window unless you change it but please make sure that it is still there before saving a file.



Click on the "Save" box in the lower right corner of the "Save Downloaded File" box.

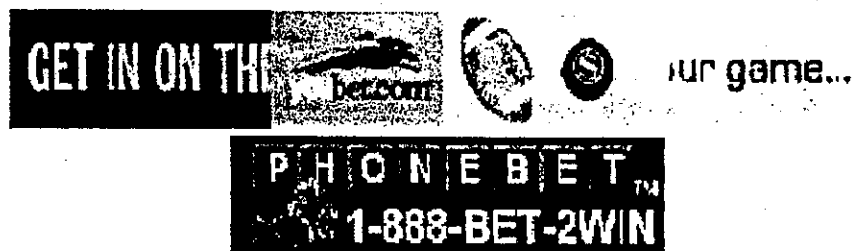
You have now completed downloading a race card. If you wish to download another card, click on the back button on your browser, otherwise, close the window and go off the Internet.

DOWNLOADING CHARTS

After connecting to the internet enter the following address in the "location or "address" box on the Internet Browser Screen:

www.axcis.com/track/

When you reach this location, it will read "Download Charts". Bookmark it so that you don't have to re-enter the address each time. It may be necessary to click on the "charts" selection as shown on the right of this screen in order to get to the download charts screen.



AXCIS : TRACK : CHARTS

Product Fin



NOTE: If you are using the Internet Explorer Browser, click on the line for special instructions for downloading comma-delimited files.

On this screen, scroll down to the columns for selecting the track and date.

Track:	<div>BMF ▲ BRD CBY CD CLS CNL CT DED DEL ▼</div>	Year:	<div>1998 1999 2000</div>	Month:	<div>Jly ▲ Aug Sep Oct Nov Dec ▼</div>	Day:	<div>23 ▲ 24 25 26 27 28 ▼</div>
		Format:	<div>Text Comma Delimited Tab Delimited</div>				

Submit Chart Request

Click on the track and date desired to highlight them

IMPORTANT: Make sure you click on the Comma Delimited selection and highlight it.

Click on Submit Chart Request

The next screen will show the Track and Date requested as in Hol0719 a.99 If this is the chart you have selected - scroll down and click here as directed. Make sure that the track and date are followed by the a.99 designation.

Charts Download Confirmation

You have requested a chart for

Bay Meadows Oct 31, 1999 (bm1031.a99) Comma Delimited Format

You will be charged \$1.00 for this chart. If this is not what you want, press your browser's "Back" button to change your selection...do not click on the link below.

If this is the correct track, date, and format please [click here](#) to receive the chart.

The same box will appear in the middle of your screen to indicate the downloading process. When the download is completed, you may again have to click on the anti-virus icon in the bottom tool bar to bring up the "Save in" box.

The procedure for saving the file is the same as that for saving a downloaded race card. Again, make sure that "Trkmast" is showing in the "save in" window before clicking on the save button.

NOTE: IF YOU ARE USING THE SYNTHESIS MULTI-TRACK PROGRAM (SMT) WHEN YOU HAVE FINISHED DOWNLOADING FILES. RETURN TO SMT AND SELECT #6 'PROCESS DOWNLOADED CHARTS' FROM THE MENU. THIS WILL COMPLETE THE PROCESS OF INSTALLING THE CHARTS IN THE WAGERING DECISION PORTION OF THE PROGRAM.

IMPORTANT INFORMATION

The instructions on the TrackMaster web site, especially those relating to an RC Data file are for use with the TrackMaster Programs. Follow the instructions above and please do not create an RC Data file. TrackMaster may have sent you one or more disks. These are not necessary for use with the Sartin Programs however if you have installed them they will not interfere with the operation of the programs

The examples we have shown are from the Netscape Browser and Earthlink. Depending on your Internet Service Provider and the Browser you use, the examples of the screens and the order in which they appear may vary slightly but the meaning will be the same. After you have practiced a few times with your own particular computer you will find that downloading is an easy procedure.

If for some reason you have unsuccessfully downloaded a race card, do not try to re-download the same card as it does nothing but confuse the program. Switch to another track or date and try again.

*Happy Holidays
and Happy Y2K from your staff at
O. Henry House...*

Greetings,

This is our chance to say hello and wish you all a wondrous 2000. To clarify a few things to make your calling, visiting, ordering process easier:

1 The office number is 909-845-5907. Call us to find out about the status of an order, pricing, Follow Up subscriptions, to make an appointment with Dr. Sartin, to tell us you're coming by to pick something up, to say hello (we love that!). Anything to do with the administrative side of the business.

2. The Tech Support number is 909-845-1728. That's the number to talk to Shane or Aline about 'how to' or 'ye gads, the program does this when I do that!' or 'can I/how do I copy files from ...to...'. In other words, anything to do with the programs. They can help you install, un-install, re-install, download, explain printouts - on and on.

Quite talented they are!

3. When requesting something, please write us a note as to what it is. We get a lot of things such as: disks with no notes (do they need a replacement?); checks, with no notes, for amounts that are not clear as to what they are for; or checks with notes attached like "this is for the item we discussed on the phone". I try to write it all down, but even when I do, I lose the note! So just tell us **WHAT** it was we discussed.

4. Sorry, we don't take credit cards.

5. We love you all and love to see you. We just like to know you're coming. Please call the office before arriving at the door.

O. Henry House is:

- ~ Mary Sartin, the Elder and wife of Howard. She handles all shipping, reads everyone's notes with care, and is the mainstay of our organization;
- ~ Mary Sartin, the Younger (well, I'm 50, but the Jr. thing sounds really ridiculous) daughter of Mary and Howard and sister to Shane. I'm the one you talk to on the phone and the one responsible when things go wrong;
- ~ Shane Sartin (his first name is actually Howard, but we have enough identity problems already) son of Mary and Howard and brother to Mary. Shane does Tech Support, assists with shipping, tests programs and a myriad of other things;
- ~ Mike Sartin, who helps us out. This is Shane's son;
- ~ Aline Best, who is a lifesaver. She's also very good at tech support. She's not blood related; and of course
- ~ Howard (Doc) Sartin ...but we don't consider him staff.

